

Datasheet for ABIN2779835  
**anti-ETV2 antibody (Middle Region)**



[Go to Product page](#)

1 Image

## Overview

Quantity:	100 µL
Target:	ETV2
Binding Specificity:	Middle Region
Reactivity:	Mouse, Rat, Cow
Host:	Rabbit
Clonality:	Polyclonal
Conjugate:	This ETV2 antibody is un-conjugated
Application:	Western Blotting (WB)

## Product Details

Immunogen:	The immunogen is a synthetic peptide directed towards the middle region of mouse Etv2
Sequence:	GHQSPAFTTP SKSNKQSDRA TLTRYSKTNH RGPIQLWQFL LELLHDGARS
Predicted Reactivity:	Cow: 85%, Mouse: 100%, Rat: 92%
Characteristics:	This is a rabbit polyclonal antibody against Etv2. It was validated on Western Blot.
Purification:	Affinity Purified

## Target Details

Target:	ETV2
Alternative Name:	Etv2 ( <a href="#">ETV2 Products</a> )
Background:	Etv2 binds to DNA sequences containing the consensus pentanucleotide 5'-CGGA[AT]-3'.

Target Details

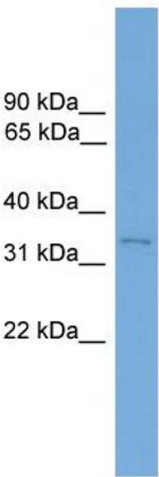
	Alias Symbols: Etsrp71
	Protein Size: 335
Molecular Weight:	37 kDa
Gene ID:	14008
NCBI Accession:	<a href="#">NM_007959</a> , <a href="#">NP_031985</a>
UniProt:	<a href="#">P41163</a>

Application Details

Application Notes:	Optimal working dilutions should be determined experimentally by the investigator.
Comment:	Antigen size: 335 AA
Restrictions:	For Research Use only

Handling

Format:	Liquid
Concentration:	Lot specific
Buffer:	Liquid. Purified antibody supplied in 1x PBS buffer with 0.09 % (w/v) sodium azide and 2 % sucrose.
Preservative:	Sodium azide
Precaution of Use:	This product contains Sodium azide: a POISONOUS AND HAZARDOUS SUBSTANCE which should be handled by trained staff only.
Handling Advice:	Avoid repeated freeze-thaw cycles.
Storage:	-20 °C
Storage Comment:	For short term use, store at 2-8°C up to 1 week. For long term storage, store at -20°C in small aliquots to prevent freeze-thaw cycles.



Western Blotting

**Image 1.** WB Suggested Anti-Etv2 Antibody Titration: 0.2-1 ug/ml Positive Control: Mouse Lung