

Datasheet for ABIN2779840  
**anti-GATA5 antibody (C-Term)**[Go to Product page](#)

## 2 Images

## Overview

Quantity:	100 µL
Target:	GATA5
Binding Specificity:	C-Term
Reactivity:	Rat, Mouse
Host:	Rabbit
Clonality:	Polyclonal
Conjugate:	This GATA5 antibody is un-conjugated
Application:	Western Blotting (WB)

## Product Details

Immunogen:	The immunogen is a synthetic peptide directed towards the C terminal region of mouse GATA5
Sequence:	SPTLLNSESS ATTLKAESSL ASPVCAGPTI TSQASSPADE SLASSHLEFK
Predicted Reactivity:	Mouse: 100%, Rat: 100%
Characteristics:	This is a rabbit polyclonal antibody against GATA5. It was validated on Western Blot using a cell lysate as a positive control.
Purification:	Protein A purified

## Target Details

Target:	GATA5
Alternative Name:	GATA5 ( <a href="#">GATA5 Products</a> )

## Target Details

Background:	<p>GATA5 is induced at an early stage of endothelial-endocardial differentiation prior to expression of such early endocardial markers as Tie2 and ErbB3. It is required for differentiation of cardiogenic precursors into endothelial endocardial cells.</p> <p>Protein Interaction Partner: Smad4, Rorb, Med16, Zfp292,</p> <p>Protein Size: 404</p>
Molecular Weight:	44 kDa
Gene ID:	14464
NCBI Accession:	<a href="#">NM_008093</a> , <a href="#">NP_032119</a>
UniProt:	<a href="#">P97489</a>

## Application Details

Application Notes:	Optimal working dilutions should be determined experimentally by the investigator.
Comment:	Antigen size: 404 AA
Restrictions:	For Research Use only

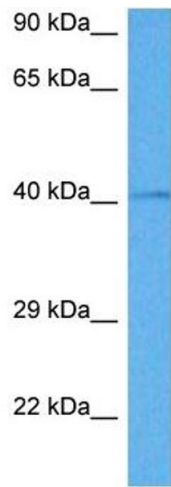
## Handling

Format:	Liquid
Concentration:	Lot specific
Buffer:	Liquid. Purified antibody supplied in 1x PBS buffer with 0.09 % (w/v) sodium azide and 2 % sucrose.
Preservative:	Sodium azide
Precaution of Use:	This product contains Sodium azide: a POISONOUS AND HAZARDOUS SUBSTANCE which should be handled by trained staff only.
Handling Advice:	Avoid repeated freeze-thaw cycles.
Storage:	-20 °C
Storage Comment:	For short term use, store at 2-8°C up to 1 week. For long term storage, store at -20°C in small aliquots to prevent freeze-thaw cycles.



**Western Blotting**

**Image 1.** WB Suggested Anti-GATA5 Antibody Titration: 1.25ug/ml ELISA Titer: 1:1562500 Positive Control: SP2/0 cell lysate



**Western Blotting**

**Image 2.** Host: Rabbit Target Name: GATA5 Sample Tissue: Mouse Testis Antibody Dilution: 1ug/ml