

Datasheet for ABIN2779842
anti-GCM1 antibody (N-Term)[Go to Product page](#)[1 Image](#)[1 Publication](#)

Overview

Quantity:	100 µL
Target:	GCM1
Binding Specificity:	N-Term
Reactivity:	Human, Mouse, Rat, Dog, Horse, Guinea Pig, Cow, Zebrafish (Danio rerio)
Host:	Rabbit
Clonality:	Polyclonal
Conjugate:	This GCM1 antibody is un-conjugated
Application:	Western Blotting (WB)

Product Details

Immunogen:	The immunogen is a synthetic peptide directed towards the N terminal region of mouse Gcm1
Sequence:	KEILSWDIND VKLPQNVKTT DWFQEWPDYS VKHIYSSDDR NAQRHLSSWA
Predicted Reactivity:	Cow: 100%, Dog: 93%, Guinea Pig: 86%, Horse: 93%, Human: 86%, Mouse: 100%, Rat: 93%, Zebrafish: 86%
Characteristics:	This is a rabbit polyclonal antibody against Gcm1. It was validated on Western Blot.
Purification:	Affinity Purified

Target Details

Target:	GCM1
Alternative Name:	Gcm1 (GCM1 Products)

Target Details

Background: Transcription factor that is necessary for placental development
Alias Symbols: GCMA, Gcm-rs2, Gcm1-rs1, glide
Protein Size: 436

Molecular Weight: 49 kDa

Gene ID: 14531

NCBI Accession: [NM_008103](#), [NP_032129](#)

UniProt: [P70348](#)

Application Details

Application Notes: Optimal working dilutions should be determined experimentally by the investigator.

Comment: Antigen size: 436 AA

Restrictions: For Research Use only

Handling

Format: Liquid

Concentration: Lot specific

Buffer: Liquid. Purified antibody supplied in 1x PBS buffer with 0.09 % (w/v) sodium azide and 2 % sucrose.

Preservative: Sodium azide

Precaution of Use: This product contains Sodium azide: a POISONOUS AND HAZARDOUS SUBSTANCE which should be handled by trained staff only.

Handling Advice: Avoid repeated freeze-thaw cycles.

Storage: -20 °C

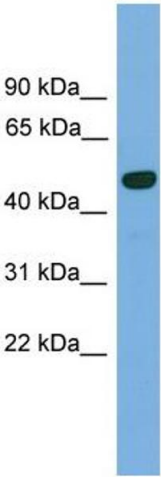
Storage Comment: For short term use, store at 2-8°C up to 1 week. For long term storage, store at -20°C in small aliquots to prevent freeze-thaw cycles.

Publications

Product cited in: Zhang, Muralimanoharan, Wortman, Mendelson: "Primate-specific miR-515 family members inhibit key genes in human trophoblast differentiation and are upregulated in preeclampsia." in: **Proceedings of the National Academy of Sciences of the United States of America**, (2016) (

[PubMed](#)).

Images



Western Blotting

Image 1. WB Suggested Anti-Gcm1 Antibody Titration: 0.2-1 ug/ml Positive Control: Mouse Heart