



[Go to Product page](#)

Datasheet for ABIN2779885  
**anti-RHOX6 antibody (Middle Region)**

1 Image

### Overview

Quantity:	100 µL
Target:	RHOX6
Binding Specificity:	Middle Region
Reactivity:	Mouse
Host:	Rabbit
Clonality:	Polyclonal
Conjugate:	This RHOX6 antibody is un-conjugated
Application:	Western Blotting (WB)

### Product Details

Immunogen:	The immunogen is a synthetic peptide corresponding to a region of Mouse
Sequence:	GRHAGDGASS SEDDSILEEG GENIDQPPQ QEAASPDSIR NPHVLNRLAQ
Predicted Reactivity:	Mouse: 100%
Characteristics:	This is a rabbit polyclonal antibody against Rhox6. It was validated on Western Blot.
Purification:	Affinity Purified

### Target Details

Target:	RHOX6
Alternative Name:	Rhox6 ( <a href="#">RHOX6 Products</a> )
Background:	The function of this protein remains unknown.

## Target Details

---

Alias Symbols: AV213605, AW548842, Pxs1

Protein Size: 227

Molecular Weight: 25 kDa

Gene ID: 19202

NCBI Accession: [NM\\_008955](#), [NP\\_032981](#)

UniProt: [Q8BPD6](#)

## Application Details

---

Application Notes: Optimal working dilution should be determined by the investigator.

Comment: Antigen size: 227 AA

Restrictions: For Research Use only

## Handling

---

Format: Liquid

Concentration: Lot specific

Buffer: Liquid. Purified antibody supplied in 1x PBS buffer with 0.09 % (w/v) sodium azide and 2 % sucrose.

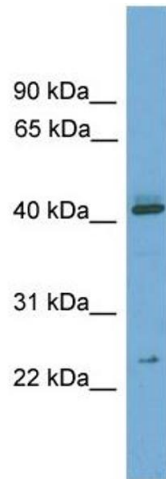
Preservative: Sodium azide

Precaution of Use: This product contains Sodium azide: a POISONOUS AND HAZARDOUS SUBSTANCE which should be handled by trained staff only.

Handling Advice: Avoid repeated freeze-thaw cycles.

Storage: -20 °C

Storage Comment: For short term use, store at 2-8°C up to 1 week. For long term storage, store at -20°C in small aliquots to prevent freeze-thaw cycles.



### Western Blotting

**Image 1.** WB Suggested Anti-RhoX6 Antibody Titration: 0.2-1 ug/ml Positive Control: Mouse Heart