

Datasheet for ABIN2779886
anti-PTRF antibody (Middle Region)

5 Images

[Go to Product page](#)

Overview

Quantity:	100 µL
Target:	PTRF
Binding Specificity:	Middle Region
Reactivity:	Human, Mouse, Rat, Rabbit, Cow, Horse, Dog
Host:	Rabbit
Clonality:	Polyclonal
Conjugate:	This PTRF antibody is un-conjugated
Application:	Western Blotting (WB), Immunohistochemistry (IHC)

Product Details

Immunogen:	The immunogen is a synthetic peptide directed towards the middle region of mouse PTRF
Sequence:	SEALPEKEGD ELGEGERPED DTAAIELSSD EAVEVEEVIE ESRAERIKRS
Predicted Reactivity:	Cow: 85%, Dog: 92%, Horse: 92%, Human: 90%, Mouse: 100%, Rabbit: 85%, Rat: 92%
Characteristics:	This is a rabbit polyclonal antibody against PTRF. It was validated on Western Blot using a cell lysate as a positive control.
Purification:	Protein A purified

Target Details

Target:	PTRF
Alternative Name:	PTRF (PTRF Products)

Target Details

Background: In mouse, pausing of elongation complexes is mediated by the transcription termination factor TTF-I bound to the 'Sal box' terminator downstream of the rDNA transcription unit. PTRF is a Pol I and transcript release factor for dissociation of paused ternary complexes.

Alias Symbols: Cavin, Cav-p60, AW546441, 2310075E07Rik

Protein Interaction Partner: Fbxo32, Dmd, Htt,

Protein Size: 392

Molecular Weight: 43 kDa

Gene ID: 19285

NCBI Accession: [NM_008986](#), [NP_033012](#)

UniProt: [O54724](#)

Application Details

Application Notes: Optimal working dilutions should be determined experimentally by the investigator.

Comment: Antigen size: 392 AA

Restrictions: For Research Use only

Handling

Format: Liquid

Concentration: Lot specific

Buffer: Liquid. Purified antibody supplied in 1x PBS buffer with 0.09 % (w/v) sodium azide and 2 % sucrose.

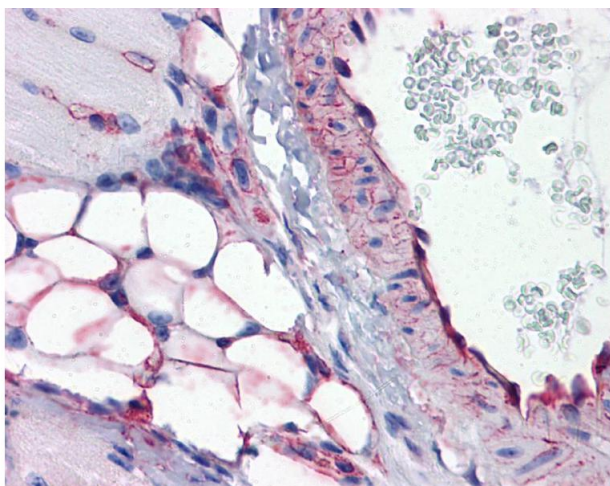
Preservative: Sodium azide

Precaution of Use: This product contains Sodium azide: a POISONOUS AND HAZARDOUS SUBSTANCE which should be handled by trained staff only.

Handling Advice: Avoid repeated freeze-thaw cycles.

Storage: -20 °C

Storage Comment: For short term use, store at 2-8°C up to 1 week. For long term storage, store at -20°C in small aliquots to prevent freeze-thaw cycles.

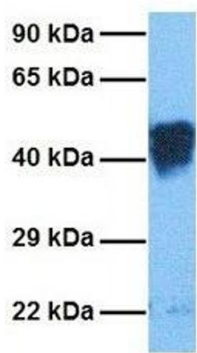


Immunohistochemistry

Image 1. IHC Information: Paraffin embedded mouse vessel and adipocytes (skeletal muscle) tissue, tested with an antibody dilution of 5 ug/ml.



PTRF



Western Blotting

Image 2. WB Suggested Anti-PTRF Antibody Titration: 0.625ug/ml ELISA Titer: 1:312500 Positive Control: NIH/3T3 cell lysate

Western Blotting

Image 3. Host: Rabbit **Target Name:** PTRF **Sample Tissue:** Human Fetal Lung **Antibody Dilution:** 1.0ug/ml

Please check the [product details page](#) for more images. Overall 5 images are available for ABIN2779886.