

Datasheet for ABIN2779895  
**anti-SIN3B antibody (N-Term)**[Go to Product page](#)

## 2 Images

## Overview

Quantity:	100 µL
Target:	SIN3B
Binding Specificity:	N-Term
Reactivity:	Mouse, Rat
Host:	Rabbit
Clonality:	Polyclonal
Conjugate:	This SIN3B antibody is un-conjugated
Application:	Western Blotting (WB)

## Product Details

Immunogen:	The immunogen is a synthetic peptide directed towards the N terminal region of mouse Sin3b
Sequence:	LSEFGQFLPE AKRSLFTGNG SCEMNSGQKN EEKSLEHNKK RSRPSLLRPV
Predicted Reactivity:	Mouse: 100%, Rat: 92%
Characteristics:	This is a rabbit polyclonal antibody against Sin3b. It was validated on Western Blot using a cell lysate as a positive control.
Purification:	Affinity Purified

## Target Details

Target:	SIN3B
Alternative Name:	Sin3b ( <a href="#">SIN3B Products</a> )

## Target Details

Background: Sin3B is one of the Sin3 co-repressors act as a protein scaffold to recruit transcription factors via its four highly homologous paired amphipathic helix (PAH) domains.

Alias Symbols: 2810430C10Rik

Protein Interaction Partner: Hdac1, Phf12, Morf4l1, Cry1, Suds3, Myt1l, Myt1, Sin3a, Mnt, Mael, Rnf220, REST, Ifrd1, MXD1, IKZF1,

Protein Size: 954

Molecular Weight: 105 kDa

Gene ID: 20467

NCBI Accession: [NM\\_009188](#), [NP\\_033214](#)

UniProt: [A1L326](#)

## Application Details

Application Notes: Optimal working dilutions should be determined experimentally by the investigator.

Comment: Antigen size: 954 AA

Restrictions: For Research Use only

## Handling

Format: Liquid

Concentration: Lot specific

Buffer: Liquid. Purified antibody supplied in 1x PBS buffer with 0.09 % (w/v) sodium azide and 2 % sucrose.

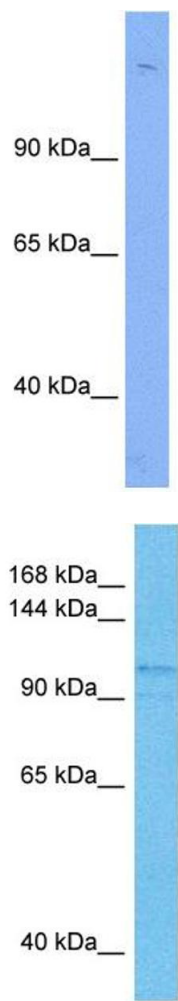
Preservative: Sodium azide

Precaution of Use: This product contains Sodium azide: a POISONOUS AND HAZARDOUS SUBSTANCE which should be handled by trained staff only.

Handling Advice: Avoid repeated freeze-thaw cycles.

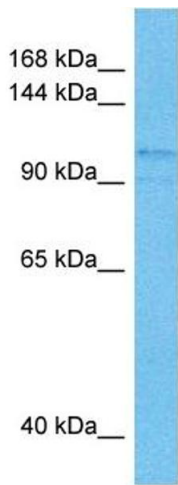
Storage: -20 °C

Storage Comment: For short term use, store at 2-8°C up to 1 week. For long term storage, store at -20°C in small aliquots to prevent freeze-thaw cycles.



**Western Blotting**

**Image 1.** WB Suggested Anti-Sin3b Antibody Titration: 0.2-1 ug/ml ELISA Titer: 1:1562500 Positive Control: Human Thymus



**Western Blotting**

**Image 2.** Host: Mouse Target Name: SIN3B Sample Tissue: Mouse Spleen Antibody Dilution: 1ug/ml