

Datasheet for ABIN2779919

anti-ATF4 antibody[Go to Product page](#)**4** Images

Overview

Quantity:	100 µL
Target:	ATF4
Reactivity:	Human, Mouse, Rat, Dog, Cow, Guinea Pig, Sheep, Horse
Host:	Rabbit
Clonality:	Polyclonal
Conjugate:	This ATF4 antibody is un-conjugated
Application:	Western Blotting (WB), Immunofluorescence (IF)

Product Details

Immunogen:	The immunogen is a synthetic peptide corresponding to a region of Mouse
Sequence:	TRYRQKKRAE QEALTGECKE LEKKNEALKE KADSLAKEIQ YLKDLIEEVR
Predicted Reactivity:	Cow: 100%, Dog: 93%, Guinea Pig: 100%, Horse: 79%, Human: 93%, Mouse: 100%, Rat: 100%, Sheep: 100%
Characteristics:	This is a rabbit polyclonal antibody against Atf4. It was validated on Western Blot.
Purification:	Affinity Purified

Target Details

Target:	ATF4
Alternative Name:	Atf4 (ATF4 Products)
Background:	The function of this protein remains unknown.

Target Details

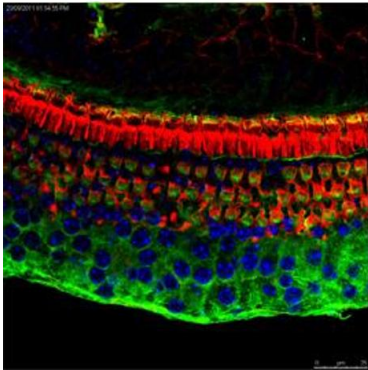
	Alias Symbols: Atf-4, C/ATF, CREB2, MGC96460, TAXREB67
	Protein Interaction Partner: Egl3, Ubc, Hif1a, Satb2, Fam175b, Trib3, Gabbr2, Gabbr1, Jun, Fos, Dapk3, Rps6ka3, Tnfsf11, Prkaca,
	Protein Size: 349
Molecular Weight:	38 kDa
Gene ID:	11911
NCBI Accession:	NM_009716 , NP_033846
UniProt:	Q5U4B2
Pathways:	Thyroid Hormone Synthesis , Myometrial Relaxation and Contraction , ER-Nucleus Signaling , Unfolded Protein Response

Application Details

Application Notes:	Optimal working dilutions should be determined experimentally by the investigator.
Comment:	Antigen size: 349 AA
Restrictions:	For Research Use only

Handling

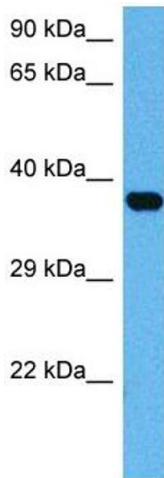
Format:	Liquid
Concentration:	Lot specific
Buffer:	Liquid. Purified antibody supplied in 1x PBS buffer with 0.09 % (w/v) sodium azide and 2 % sucrose.
Preservative:	Sodium azide
Precaution of Use:	This product contains Sodium azide: a POISONOUS AND HAZARDOUS SUBSTANCE which should be handled by trained staff only.
Handling Advice:	Avoid repeated freeze-thaw cycles.
Storage:	-20 °C
Storage Comment:	For short term use, store at 2-8°C up to 1 week. For long term storage, store at -20°C in small aliquots to prevent freeze-thaw cycles.



ATF4 (ARP37018_P050)
Immunofluorescence
Sample: mouse
Dilution: 1 to 100
Application data in forum

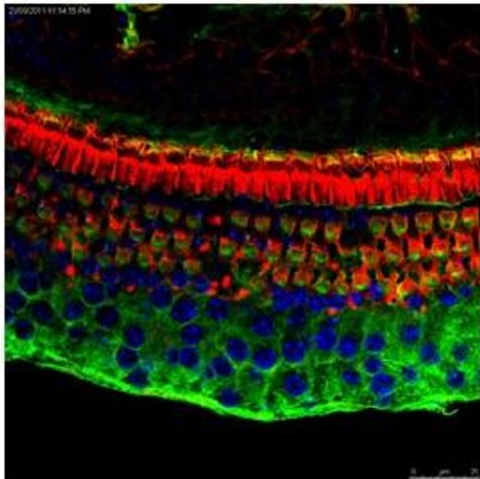
Submitted by:
Dr. Gilda Kalinec and Dr. Pru Thein
CB&G House Research Institute

Image 1.



Western Blotting

Image 2. Host: Mouse Target Name: ATF4 Sample Tissue:
Mouse Brain Antibody Dilution: 1ug/ml



Immunofluorescence

Image 3. organ of Corti

Please check the [product details page](#) for more images. Overall 4 images are available for ABIN2779919.