

Datasheet for ABIN2779933
anti-FOXF1 antibody (Middle Region)[Go to Product page](#)

2 Images

Overview

Quantity:	100 µL
Target:	FOXF1
Binding Specificity:	Middle Region
Reactivity:	Human, Mouse, Cow, Rabbit, Guinea Pig, Horse, Rat, Dog, Zebrafish (Danio rerio)
Host:	Rabbit
Clonality:	Polyclonal
Conjugate:	This FOXF1 antibody is un-conjugated
Application:	Western Blotting (WB), Immunohistochemistry (IHC)

Product Details

Immunogen:	The immunogen is a synthetic peptide directed towards the middle region of mouse Foxf1a
Sequence:	GCGGSAAGEY PHHDSSVPAS PLLPAGAGGV MEHAVYSSS AAAWPPAASA
Predicted Reactivity:	Cow: 86%, Dog: 93%, Guinea Pig: 93%, Horse: 93%, Human: 93%, Mouse: 100%, Rabbit: 86%, Rat: 100%, Zebrafish: 77%
Characteristics:	This is a rabbit polyclonal antibody against Foxf1a. It was validated on Western Blot.
Purification:	Affinity Purified

Target Details

Target:	FOXF1
Alternative Name:	Foxf1a (FOXF1 Products)

Target Details

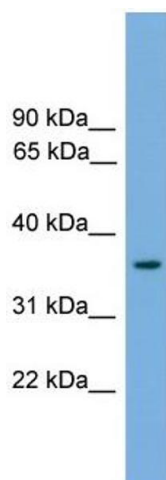
Background:	The function of this protein remains unknown. Alias Symbols: AI450827, FREAC1, Foxf1, Freac-1, HFH-8, Hfh8, Foxf1a Protein Size: 353
Molecular Weight:	38 kDa
Gene ID:	15227
NCBI Accession:	NM_010426 , NP_034556
UniProt:	Q61080
Pathways:	Regulation of Leukocyte Mediated Immunity , Regulation of Muscle Cell Differentiation , Positive Regulation of Immune Effector Process

Application Details

Application Notes:	Optimal working dilutions should be determined experimentally by the investigator.
Comment:	Antigen size: 353 AA
Restrictions:	For Research Use only

Handling

Format:	Liquid
Concentration:	Lot specific
Buffer:	Liquid. Purified antibody supplied in 1x PBS buffer with 0.09 % (w/v) sodium azide and 2 % sucrose.
Preservative:	Sodium azide
Precaution of Use:	This product contains Sodium azide: a POISONOUS AND HAZARDOUS SUBSTANCE which should be handled by trained staff only.
Handling Advice:	Avoid repeated freeze-thaw cycles.
Storage:	-20 °C
Storage Comment:	For short term use, store at 2-8°C up to 1 week. For long term storage, store at -20°C in small aliquots to prevent freeze-thaw cycles.



Western Blotting

Image 1. WB Suggested Anti-Foxf1a Antibody Titration: 0.2-1 ug/ml ELISA Titer: 1:312500 Positive Control: Mouse Heart



Immunohistochemistry

Image 2. Sample Type: Mouse E 18.5 Gut Dilution: 1:1000