

Datasheet for ABIN2779956  
**anti-MSX1 antibody (N-Term)**



[Go to Product page](#)

1 Image

## Overview

Quantity:	100 µL
Target:	MSX1
Binding Specificity:	N-Term
Reactivity:	Human, Mouse, Rat, Cow, Dog, Pig
Host:	Rabbit
Clonality:	Polyclonal
Conjugate:	This MSX1 antibody is un-conjugated
Application:	Western Blotting (WB)

## Product Details

Immunogen:	The immunogen is a synthetic peptide directed towards the N terminal region of mouse MSX1
Sequence:	KPGAKESVLV ASEGAQAAGG SVQHLGTRPG SLGAPDAPSS PRPLGHFSVG
Predicted Reactivity:	Cow: 100%, Dog: 100%, Human: 100%, Mouse: 100%, Pig: 100%, Rat: 100%
Characteristics:	This is a rabbit polyclonal antibody against MSX1. It was validated on Western Blot using a cell lysate as a positive control.
Purification:	Protein A purified

## Target Details

Target:	MSX1
Alternative Name:	MSX1 ( <a href="#">MSX1 Products</a> )

## Target Details

Background:	<p>MSX1 belongs to the MSX family. MSX and DLX are members of the Antennapedia class of non-Hox homeodomain transcription factors that regulate gene expression and influence development of the craniofacial structures and anterior forebrain.</p> <p>Alias Symbols: msh, Hox7, Hox-7, Hox7.1, AA675338, AI324650</p> <p>Protein Interaction Partner: Mc5r, Mc4r, Mc3r, Mc1r, Hist1h1a, Hist1h1b, Hist1h1e, Tle4, Pou2f1, Msx1, Aes, Tbp, Dlx2, Gmnn, Pax9, Myod1,</p> <p>Protein Size: 299</p>
Molecular Weight:	33 kDa
Gene ID:	17701
NCBI Accession:	<a href="#">NM_010835</a> , <a href="#">NP_034965</a>
UniProt:	<a href="#">P13297</a>
Pathways:	<a href="#">Regulation of Muscle Cell Differentiation</a> , <a href="#">Positive Regulation of Response to DNA Damage Stimulus</a>

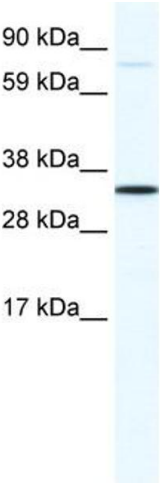
## Application Details

Application Notes:	Optimal working dilutions should be determined experimentally by the investigator.
Comment:	Antigen size: 299 AA
Restrictions:	For Research Use only

## Handling

Format:	Liquid
Concentration:	Lot specific
Buffer:	Liquid. Purified antibody supplied in 1x PBS buffer with 0.09 % (w/v) sodium azide and 2 % sucrose.
Preservative:	Sodium azide
Precaution of Use:	This product contains Sodium azide: a POISONOUS AND HAZARDOUS SUBSTANCE which should be handled by trained staff only.
Handling Advice:	Avoid repeated freeze-thaw cycles.
Storage:	-20 °C
Storage Comment:	For short term use, store at 2-8°C up to 1 week. For long term storage, store at -20°C in small

aliquots to prevent freeze-thaw cycles.



**Western Blotting**

**Image 1.** WB Suggested Anti-MSX1 Antibody Titration: 1.25ug/ml ELISA Titer: 1:62500 Positive Control: SP2/0 cell lysate