

Datasheet for ABIN2779963
anti-NKX2-6 antibody (N-Term)



[Go to Product page](#)

1 Image

Overview

Quantity:	100 µL
Target:	NKX2-6
Binding Specificity:	N-Term
Reactivity:	Mouse, Rat
Host:	Rabbit
Clonality:	Polyclonal
Conjugate:	This NKX2-6 antibody is un-conjugated
Application:	Western Blotting (WB)

Product Details

Immunogen:	The immunogen is a synthetic peptide corresponding to a region of Mouse
Sequence:	MGSNPVGEPQ TPPGTISR LG ARNPMTDRGV GNLSGDMRRG GPVSTRTRPQ
Predicted Reactivity:	Mouse: 100%, Rat: 83%
Characteristics:	This is a rabbit polyclonal antibody against Nkx2-6. It was validated on Western Blot.
Purification:	Affinity Purified

Target Details

Target:	NKX2-6
Alternative Name:	Nkx2-6 (NKX2-6 Products)
Background:	The function of this protein remains unknown.

Target Details

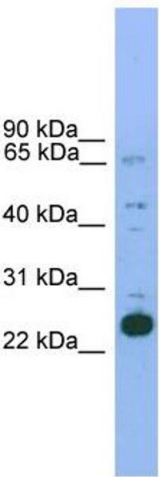
	Alias Symbols: AV044928, Nkx-2.6, Nkx2.6, Tix, tinman
	Protein Size: 216
Molecular Weight:	23 kDa
Gene ID:	18092
NCBI Accession:	NM_010920 , NP_035050
UniProt:	P43688

Application Details

Application Notes:	Optimal working dilutions should be determined experimentally by the investigator.
Comment:	Antigen size: 216 AA
Restrictions:	For Research Use only

Handling

Format:	Liquid
Concentration:	Lot specific
Buffer:	Liquid. Purified antibody supplied in 1x PBS buffer with 0.09 % (w/v) sodium azide and 2 % sucrose.
Preservative:	Sodium azide
Precaution of Use:	This product contains Sodium azide: a POISONOUS AND HAZARDOUS SUBSTANCE which should be handled by trained staff only.
Handling Advice:	Avoid repeated freeze-thaw cycles.
Storage:	-20 °C
Storage Comment:	For short term use, store at 2-8°C up to 1 week. For long term storage, store at -20°C in small aliquots to prevent freeze-thaw cycles.



Western Blotting

Image 1. WB Suggested Anti-Nkx2-6 Antibody Titration:
0.2-1 ug/ml ELISA Titer: 1:1562500 Positive Control: Mouse
Heart