



Datasheet for ABIN2779970
anti-SREBF1 antibody (N-Term)



[Go to Product page](#)

2 Images

Overview

Quantity:	100 µL
Target:	SREBF1
Binding Specificity:	N-Term
Reactivity:	Rat, Mouse
Host:	Rabbit
Clonality:	Polyclonal
Conjugate:	This SREBF1 antibody is un-conjugated
Application:	Western Blotting (WB)

Product Details

Immunogen:	The immunogen is a synthetic peptide directed towards the N terminal region of mouse SREBF1
Sequence:	DIEDMLQLIN NQDSDFPGLF DAPYAGGETG DTGPSSPGAN SPESFSSASL
Predicted Reactivity:	Mouse: 100%, Rat: 93%
Characteristics:	This is a rabbit polyclonal antibody against SREBF1. It was validated on Western Blot using a cell lysate as a positive control.
Purification:	Affinity Purified

Target Details

Target:	SREBF1
---------	--------

Target Details

Alternative Name:	SREBF1 (SREBF1 Products)
Background:	<p>Srebf1 is transcriptional activator that binds to the sterol regulatory element 1 (SRE-1) (5'-ATCACCCAC-3'). Srebf1 also binds to an E-box motif (5'-ATCACGTGA-3'). Srebf1 regulates the transcription of genes for sterol biosynthesis and the LDL receptor gene.</p> <p>Alias Symbols: ADD1, ADD-1, SREBP1, bHLHd1, SREBP-1, SREBP1c, SREBP-1a, SREBP-1c, D630008H06</p> <p>Protein Interaction Partner: Rnf20, Zbtb7c, Ppargc1b, Rela, Ewsr1, Pcbd1,</p> <p>Protein Size: 1134</p>
Molecular Weight:	125 kDa
Gene ID:	20787
NCBI Accession:	NM_011480 , NP_035610
UniProt:	Q9WTN3
Pathways:	AMPK Signaling , Caspase Cascade in Apoptosis , Negative Regulation of Hormone Secretion , Regulation of Lipid Metabolism by PPARalpha

Application Details

Application Notes:	Optimal working dilutions should be determined experimentally by the investigator.
Comment:	Antigen size: 1134 AA
Restrictions:	For Research Use only

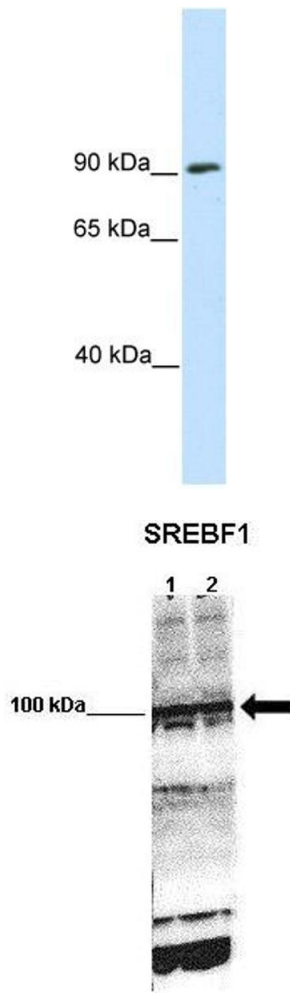
Handling

Format:	Liquid
Concentration:	Lot specific
Buffer:	Liquid. Purified antibody supplied in 1x PBS buffer with 0.09 % (w/v) sodium azide and 2 % sucrose.
Preservative:	Sodium azide
Precaution of Use:	This product contains Sodium azide: a POISONOUS AND HAZARDOUS SUBSTANCE which should be handled by trained staff only.
Handling Advice:	Avoid repeated freeze-thaw cycles.
Storage:	-20 °C

Handling

Storage Comment: For short term use, store at 2-8°C up to 1 week. For long term storage, store at -20°C in small aliquots to prevent freeze-thaw cycles.

Images



Western Blotting

Image 1. WB Suggested Anti-SREBF1 Antibody Titration: 0.2-1 ug/ml ELISA Titer: 1:62500 Positive Control: SP2/0 cell lysate

Western Blotting

Image 2. WB Suggested Anti-SREBF1 Antibody Positive Control: Lane 1: 50ug mouse glomerular endothelial lysate Lane 2: 50ug mouse glomerular endothelial lysate Primary Antibody Dilution : 1:1000 Secondary Antibody : Anti-rabbit-HRP Secondary Antibody Dilution : 1:5000 Submitted by: Xiaoxin Wang, UC Denver