

Datasheet for ABIN2779982  
**anti-FIGLA antibody (C-Term)**[Go to Product page](#)

## 1 Image

## Overview

Quantity:	100 µL
Target:	FIGLA
Binding Specificity:	C-Term
Reactivity:	Mouse, Rat
Host:	Rabbit
Clonality:	Polyclonal
Conjugate:	This FIGLA antibody is un-conjugated
Application:	Western Blotting (WB)

## Product Details

Immunogen:	The immunogen is a synthetic peptide directed towards the C-terminal region of Mouse Figla
Sequence:	SSTRELLGNA TQPTSCASGL KKEEEGPWAY AGHSEPLYSY HQSTVPETRS
Predicted Reactivity:	Mouse: 100%, Rat: 86%
Characteristics:	This is a rabbit polyclonal antibody against Figla. It was validated on Western Blot.
Purification:	Affinity Purified

## Target Details

Target:	FIGLA
Alternative Name:	Figla ( <a href="#">FIGLA Products</a> )
Background:	Figla is a germ-line specific transcription factor implicated in postnatal oocyte-specific gene

## Target Details

expression. It plays a key regulatory role in the expression of multiple oocyte-specific genes, including those that initiate folliculogenesis and those that encode the zona pellucida (ZP1, ZP2 and ZP3) required for fertilization and early embryonic survival. It is essential for oocytes to survive and form primordial follicles. The persistence of FIGLA in adult females suggests that it may regulate additional pathways that are essential for normal ovarian development. Figla binds to the E-box (5'-CANNTG-3') of the ZPs (ZP1, ZP2, ZP3) promoters.

Alias Symbols: bHLHc8

Protein Size: 194

Molecular Weight: 21 kDa

Gene ID: 26910

NCBI Accession: [NM\\_012013](#), [NP\\_036143](#)

UniProt: [O55208](#)

## Application Details

Restrictions: For Research Use only

## Handling

Format: Liquid

Concentration: 1 mg/mL

Buffer: Liquid. Purified antibody supplied in 1x PBS buffer with 0.09 % (w/v) sodium azide and 2 % sucrose.

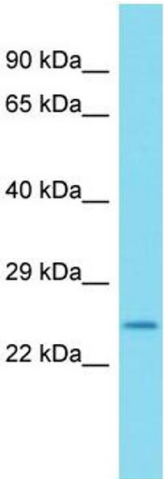
Preservative: Sodium azide

Precaution of Use: This product contains Sodium azide: a POISONOUS AND HAZARDOUS SUBSTANCE which should be handled by trained staff only.

Handling Advice: Avoid repeat freeze-thaw cycles.

Storage: -20 °C

Storage Comment: For short term use, store at 2-8°C up to 1 week. For long term storage, store at -20°C in small aliquots to prevent freeze-thaw cycles.



Western Blotting

**Image 1.** Host: Rabbit Target Name: Figla Sample Type: Mouse Spleen lysates Antibody Dilution: 1.0ug/ml