

Datasheet for ABIN2779984
anti-ECSIT antibody (Middle Region)



[Go to Product page](#)

1 Image

Overview

Quantity:	100 µL
Target:	ECSIT
Binding Specificity:	Middle Region
Reactivity:	Human, Mouse, Rat, Cow, Rabbit, Dog, Horse, Guinea Pig
Host:	Rabbit
Clonality:	Polyclonal
Conjugate:	This ECSIT antibody is un-conjugated
Application:	Western Blotting (WB)

Product Details

Immunogen:	The immunogen is a synthetic peptide directed towards the middle region of mouse SITPEC
Sequence:	KVTVYQMSLP SDSTGMEDPT QPHIVGIQSP DQQAALARHN PSRPVFVEGP
Predicted Reactivity:	Cow: 79%, Dog: 86%, Guinea Pig: 93%, Horse: 100%, Human: 100%, Mouse: 100%, Rabbit: 100%, Rat: 100%
Characteristics:	This is a rabbit polyclonal antibody against SITPEC. It was validated on Western Blot using a cell lysate as a positive control.
Purification:	Protein A purified

Target Details

Target:	ECSIT
---------	-------

Target Details

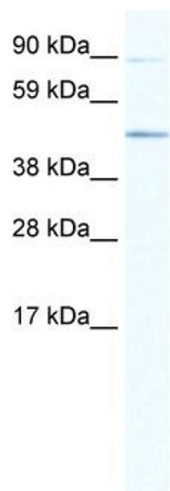
Alternative Name:	SITPEC (ECSIT Products)
Background:	Sitpec functions as an essential component in two important signal transduction pathways and establishes a novel role for Ecsit as a cofactor for Smad proteins in the bone morphogenetic protein signaling pathway. Alias Symbols: Sitpec Protein Interaction Partner: Map3k1, Traf6, Irak1, SMURF1, Protein Size: 435
Molecular Weight:	48 kDa
Gene ID:	26940
NCBI Accession:	NM_012029 , NP_036159
UniProt:	Q9QZH6
Pathways:	TLR Signaling , Toll-Like Receptors Cascades , SARS-CoV-2 Protein Interactome

Application Details

Application Notes:	Optimal working dilutions should be determined experimentally by the investigator.
Comment:	Antigen size: 435 AA
Restrictions:	For Research Use only

Handling

Format:	Liquid
Concentration:	Lot specific
Buffer:	Liquid. Purified antibody supplied in 1x PBS buffer with 0.09 % (w/v) sodium azide and 2 % sucrose.
Preservative:	Sodium azide
Precaution of Use:	This product contains Sodium azide: a POISONOUS AND HAZARDOUS SUBSTANCE which should be handled by trained staff only.
Handling Advice:	Avoid repeated freeze-thaw cycles.
Storage:	-20 °C
Storage Comment:	For short term use, store at 2-8°C up to 1 week. For long term storage, store at -20°C in small aliquots to prevent freeze-thaw cycles.



Western Blotting

Image 1. WB Suggested Anti-SITPEC Antibody Titration:
1.25ug/ml ELISA Titer: 1:1562500 Positive Control: NIH/3T3
cell lysate