

Datasheet for ABIN2779985
anti-ETV3 antibody (C-Term)[Go to Product page](#)

1 Image

Overview

Quantity:	100 µL
Target:	ETV3
Binding Specificity:	C-Term
Reactivity:	Mouse, Rat
Host:	Rabbit
Clonality:	Polyclonal
Conjugate:	This ETV3 antibody is un-conjugated
Application:	Western Blotting (WB)

Product Details

Immunogen:	The immunogen is a synthetic peptide directed towards the C-terminal region of Mouse Etv3
Sequence:	EPLEGTEDSE DRSVREPGVP EKKEDALMPP KLRLKRRWND DPEARELNKT
Predicted Reactivity:	Mouse: 100%, Rat: 100%
Characteristics:	This is a rabbit polyclonal antibody against Etv3. It was validated on Western Blot.
Purification:	Affinity Purified

Target Details

Target:	ETV3
Alternative Name:	Etv3 (ETV3 Products)
Background:	The function of this protein remains unknown.

Target Details

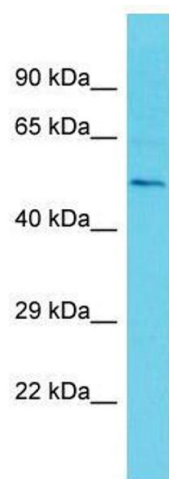
	Alias Symbols: AI414410, METS, Pe1 Protein Interaction Partner: Foxp3, Ddx20, Protein Size: 513
Molecular Weight:	56 kDa
Gene ID:	27049
NCBI Accession:	NM_012051 , NP_036181
UniProt:	G3V813

Application Details

Application Notes:	Optimal working dilutions should be determined experimentally by the investigator.
Comment:	Antigen size: 513 AA
Restrictions:	For Research Use only

Handling

Format:	Liquid
Concentration:	Lot specific
Buffer:	Liquid. Purified antibody supplied in 1x PBS buffer with 0.09 % (w/v) sodium azide and 2 % sucrose.
Preservative:	Sodium azide
Precaution of Use:	This product contains Sodium azide: a POISONOUS AND HAZARDOUS SUBSTANCE which should be handled by trained staff only.
Handling Advice:	Avoid repeated freeze-thaw cycles.
Storage:	-20 °C
Storage Comment:	For short term use, store at 2-8°C up to 1 week. For long term storage, store at -20°C in small aliquots to prevent freeze-thaw cycles.



Western Blotting

Image 1. Host: Rabbit Target Name: Etv3 Sample Type: Mouse Testis lysates Antibody Dilution: 1.0ug/ml