



[Go to Product page](#)

Datasheet for ABIN2780008

anti-ATP6V0A1 antibody (C-Term)

4 Images

Overview

Quantity:	100 µL
Target:	ATP6V0A1
Binding Specificity:	C-Term
Reactivity:	Human, Mouse, Rat, Cow, Horse, Rabbit, Pig
Host:	Rabbit
Clonality:	Polyclonal
Application:	Western Blotting (WB), Immunohistochemistry (IHC)

Product Details

Immunogen:	The immunogen is a synthetic peptide corresponding to a region of Mouse
Sequence:	TLNFGGIRVG NGPTEEDAEI IQHDQLSTHS EDAAEPTETE VFDFGDTMVH
Predicted Reactivity:	Cow: 100%, Horse: 93%, Human: 86%, Mouse: 100%, Pig: 100%, Rabbit: 93%, Rat: 100%
Characteristics:	This is a rabbit polyclonal antibody against Atp6v0a1. It was validated on Western Blot.
Purification:	Affinity Purified

Target Details

Target:	ATP6V0A1
Alternative Name:	Atp6v0a1 (ATP6V0A1 Products)
Background:	Atp6v0a1 is required for assembly and activity of the vacuolar ATPase. Atp6v0a1 has a potential role in differential targeting and regulation of the enzyme for a specific organelle.

Target Details

Alias Symbols: AA959968, ATP6a1, Atp6n1, Atp6n1a, Atpv0a1, Vpp-1, Vpp1

Protein Interaction Partner: Eed, Atp6v1g1, Atp6v1g2, SNCA,

Protein Size: 838

Molecular Weight: 96 kDa

Gene ID: 11975

NCBI Accession: [NM_016920](#), [NP_058616](#)

UniProt: [A2A5A0](#)

Pathways: [Transition Metal Ion Homeostasis](#), [Proton Transport](#)

Application Details

Application Notes: Optimal working dilutions should be determined experimentally by the investigator.

Comment: Antigen size: 838 AA

Restrictions: For Research Use only

Handling

Format: Liquid

Concentration: Lot specific

Buffer: Liquid. Purified antibody supplied in 1x PBS buffer with 0.09 % (w/v) sodium azide and 2 % sucrose.

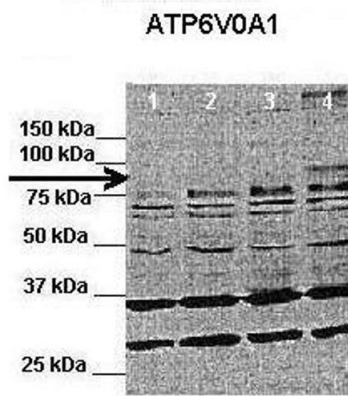
Preservative: Sodium azide

Precaution of Use: This product contains Sodium azide: a POISONOUS AND HAZARDOUS SUBSTANCE which should be handled by trained staff only.

Handling Advice: Avoid repeated freeze-thaw cycles.

Storage: -20 °C

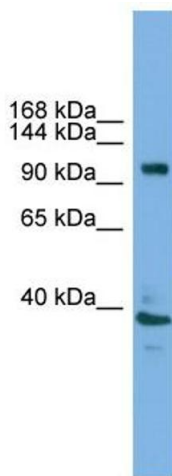
Storage Comment: For short term use, store at 2-8°C up to 1 week. For long term storage, store at -20°C in small aliquots to prevent freeze-thaw cycles.



Western Blotting

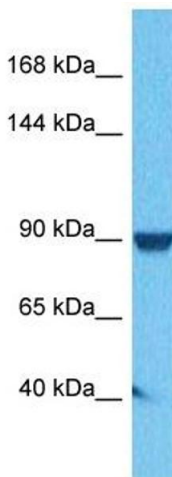
Image 1.

See Immunoblot 2 Data and Customer Feedback for more information



Western Blotting

Image 2. WB Suggested Anti-Atp6v0a1 Antibody Titration:
0.2-1 ug/ml Positive Control: Mouse Uterus



Western Blotting

Image 3. Host: Rabbit Target Name: Atp6v0a1 Sample
Tissue: Human DLD1 Whole Cell Antibody Dilution: 1ug/ml

Please check the [product details page](#) for more images. Overall 4 images are available for ABIN2780008.