

Datasheet for ABIN2780010
anti-DDX20 antibody (N-Term)[Go to Product page](#)

2 Images

Overview

Quantity:	100 µL
Target:	DDX20
Binding Specificity:	N-Term
Reactivity:	Mouse, Rat
Host:	Rabbit
Clonality:	Polyclonal
Conjugate:	This DDX20 antibody is un-conjugated
Application:	Western Blotting (WB), Immunohistochemistry (IHC)

Product Details

Immunogen:	The immunogen is a synthetic peptide directed towards the N terminal region of human Ddx20
Sequence:	RRPIPARSRL VMLPKVETEA PGLVRSHGEQ GQMPENMQVS QFKMVNYSYD
Predicted Reactivity:	Mouse: 100%, Rat: 86%
Characteristics:	This is a rabbit polyclonal antibody against Ddx20. It was validated on Western Blot.
Purification:	Affinity Purified

Target Details

Target:	DDX20
Alternative Name:	Ddx20 (DDX20 Products)
Background:	The function of Ddx20 remains unknown.

Target Details

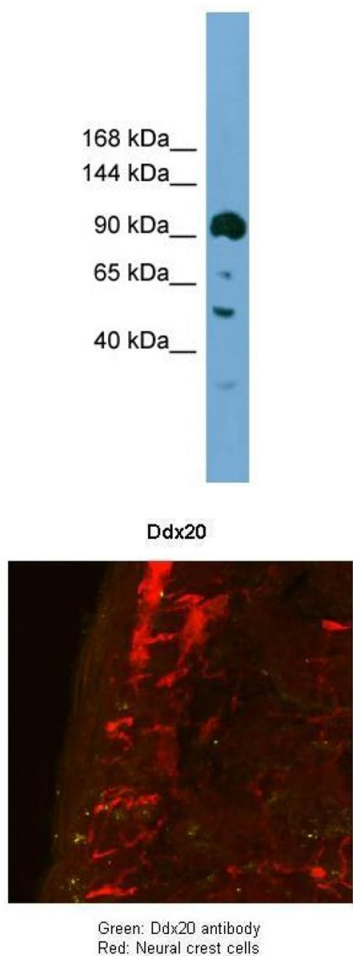
	Alias Symbols: GEMIN3, MGC159174, dp103 Protein Interaction Partner: Etv3, Ncor2, Sin3a, Ncor1, Hdac2, Protein Size: 825
Molecular Weight:	92 kDa
Gene ID:	53975
NCBI Accession:	NM_017397 , NP_059093
UniProt:	Q059Z6
Pathways:	Ribonucleoprotein Complex Subunit Organization

Application Details

Application Notes:	Optimal working dilutions should be determined experimentally by the investigator.
Comment:	Antigen size: 825 AA
Restrictions:	For Research Use only

Handling

Format:	Liquid
Concentration:	Lot specific
Buffer:	Liquid. Purified antibody supplied in 1x PBS buffer with 0.09 % (w/v) sodium azide and 2 % sucrose.
Preservative:	Sodium azide
Precaution of Use:	This product contains Sodium azide: a POISONOUS AND HAZARDOUS SUBSTANCE which should be handled by trained staff only.
Handling Advice:	Avoid repeated freeze-thaw cycles.
Storage:	-20 °C
Storage Comment:	For short term use, store at 2-8°C up to 1 week. For long term storage, store at -20°C in small aliquots to prevent freeze-thaw cycles.



See IHC 1 Data and Customer Feedback for more information

Western Blotting

Image 1. WB Suggested Anti-Ddx20 Antibody Titration: 0.2-1 ug/ml Positive Control: NIH/3T3 cell lysate

Immunohistochemistry

Image 2. Sample Type : Mouse Gut Tissue TgWnt1-Cre/+ Ednrbflex3/+ Rosa26YFPStop/YFPStop Primary Antibody Dilution : 1:50 Secondary Antibody : Goat anti-rabbit-cy3 Secondary Antibody Dilution : 1:1500 Color/Signal Descriptions : Ddx20: Green Neural crest cells:: Red Gene Name : Ddx20 Submitted by : Anonymous