

Datasheet for ABIN2780024
anti-RBM14 antibody (N-Term)[Go to Product page](#)

2 Images

Overview

Quantity:	100 µL
Target:	RBM14
Binding Specificity:	N-Term
Reactivity:	Human, Mouse, Rat, Guinea Pig, Cow, Dog, Rabbit, Pig
Host:	Rabbit
Clonality:	Polyclonal
Conjugate:	This RBM14 antibody is un-conjugated
Application:	Western Blotting (WB)

Product Details

Immunogen:	The immunogen is a synthetic peptide directed towards the N terminal region of mouse RBM14
Sequence:	KEADAKAAIA QLNGKEVKKG RINVELSTKG QKKGPAIAQ SGDKTKKPGA
Predicted Reactivity:	Cow: 93%, Dog: 93%, Guinea Pig: 86%, Human: 86%, Mouse: 100%, Pig: 93%, Rabbit: 93%, Rat: 100%
Characteristics:	This is a rabbit polyclonal antibody against RBM14. It was validated on Western Blot using a cell lysate as a positive control.
Purification:	Protein A purified

Target Details

Target:	RBM14
---------	-------

Target Details

Alternative Name:	RBM14 (RBM14 Products)
Background:	<p>RBM14 is a RNA-binding protein (RBP). RBP contribute to gene expression by regulating the form, abundance, and stability of both coding and non-coding RNA. In the vertebrate brain, RBPs account for many distinctive features of RNA processing such as activity-dependent transcript localization and localized protein synthesis.</p> <p>Alias Symbols: p16, PSP2, p16K, Sytip, 1300007E16Rik</p> <p>Protein Interaction Partner: Eed, Nanog, Tfcp2l1, Pou5f1,</p> <p>Protein Size: 573</p>
Molecular Weight:	63 kDa
Gene ID:	56275
NCBI Accession:	NM_019869 , NP_063922
UniProt:	Q62019
Pathways:	Intracellular Steroid Hormone Receptor Signaling Pathway

Application Details

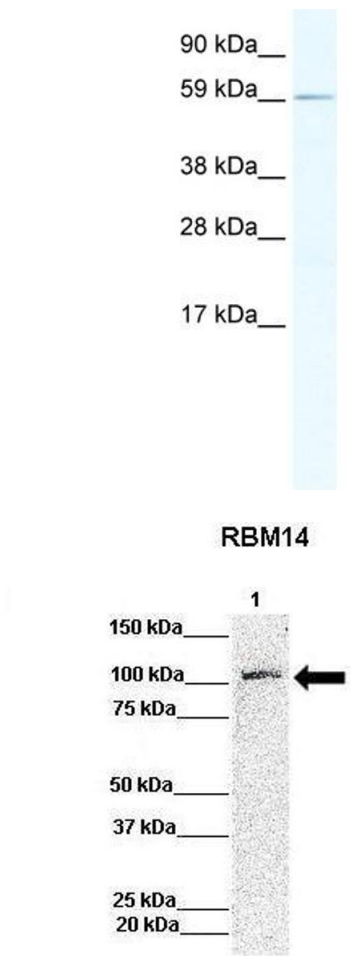
Application Notes:	Optimal working dilutions should be determined experimentally by the investigator.
Comment:	Antigen size: 573 AA
Restrictions:	For Research Use only

Handling

Format:	Liquid
Concentration:	Lot specific
Buffer:	Liquid. Purified antibody supplied in 1x PBS buffer with 0.09 % (w/v) sodium azide and 2 % sucrose.
Preservative:	Sodium azide
Precaution of Use:	This product contains Sodium azide: a POISONOUS AND HAZARDOUS SUBSTANCE which should be handled by trained staff only.
Handling Advice:	Avoid repeated freeze-thaw cycles.
Storage:	-20 °C
Storage Comment:	For short term use, store at 2-8°C up to 1 week. For long term storage, store at -20°C in small

aliquots to prevent freeze-thaw cycles.

Images



See Immunoblot 2 Data and Customer Feedback for more Information

Western Blotting

Image 1. WB Suggested Anti-RBM14 Antibody Titration: 1.25ug/ml ELISA Titer: 1:312500 Positive Control: SP2/0 cell lysate

Western Blotting

Image 2. Lanes: Lane 1: 50ug Hela Lysate Primary Antibody Dilution: 1:1000 Secondary Antibody: Anti-rabbit-HRP Secondary Antibody Dilution: 1:10,000 Gene Name: RBM14 Submitted by: Archa Fox, University of Western Australia