

Datasheet for ABIN2780030
anti-TAF1B antibody (C-Term)[Go to Product page](#)

2 Images

Overview

Quantity:	100 µL
Target:	TAF1B
Binding Specificity:	C-Term
Reactivity:	Mouse, Rat, Guinea Pig
Host:	Rabbit
Clonality:	Polyclonal
Conjugate:	This TAF1B antibody is un-conjugated
Application:	Western Blotting (WB)

Product Details

Immunogen:	The immunogen is a synthetic peptide directed towards the C terminal region of mouse TAF1B
Sequence:	YQFILNIFSF LLRIKTSALH EEVSLLEKKL FEKKYNESKK SSGSKKGRRH
Predicted Reactivity:	Guinea Pig: 82%, Mouse: 100%, Rat: 92%
Characteristics:	This is a rabbit polyclonal antibody against TAF1B. It was validated on Western Blot using a cell lysate as a positive control.
Purification:	Protein A purified

Target Details

Target:	TAF1B
Alternative Name:	TAF1B (TAF1B Products)

Target Details

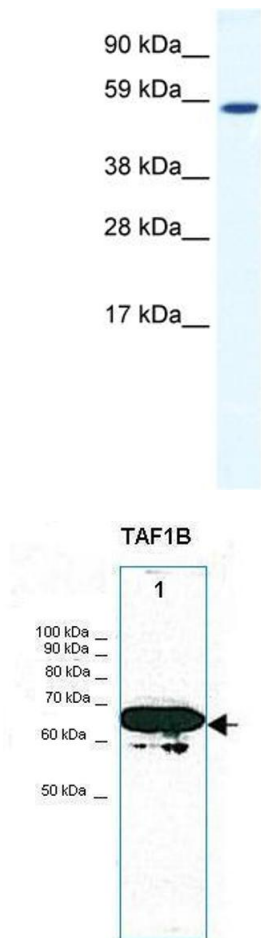
Background:	<p>TAF1b belongs to the family of TATA box binding protein (Tbp)-associated factors. Promoter selectivity for all three classes of eukaryotic RNA polymerases is brought about by multimeric protein complexes containing TATA box binding protein (TBP) and specific TBP-associated factors (TAFs).</p> <p>Alias Symbols: TAFI68, Tafi86, 4930408G01Rik, A230108M10Rik</p> <p>Protein Interaction Partner: COPS2, Tbp, Taf1c, Taf1a, Rrn3, Tcf3,</p> <p>Protein Size: 586</p>
Molecular Weight:	64 kDa
Gene ID:	21340
NCBI Accession:	NM_020614 , NP_065639
UniProt:	P97358

Application Details

Application Notes:	Optimal working dilutions should be determined experimentally by the investigator.
Comment:	Antigen size: 586 AA
Restrictions:	For Research Use only

Handling

Format:	Liquid
Concentration:	Lot specific
Buffer:	Liquid. Purified antibody supplied in 1x PBS buffer with 0.09 % (w/v) sodium azide and 2 % sucrose.
Preservative:	Sodium azide
Precaution of Use:	This product contains Sodium azide: a POISONOUS AND HAZARDOUS SUBSTANCE which should be handled by trained staff only.
Handling Advice:	Avoid repeated freeze-thaw cycles.
Storage:	-20 °C
Storage Comment:	For short term use, store at 2-8°C up to 1 week. For long term storage, store at -20°C in small aliquots to prevent freeze-thaw cycles.



See Immunoblot2 Data and Customer Feedback for more information

Western Blotting

Image 1. WB Suggested Anti-TAF1B Antibody Titration: 1.25ug/ml ELISA Titer: 1:312500 Positive Control: SP2/0 cell lysate

Western Blotting

Image 2. Lanes: 30ug NIH3T3 cell lysate Primary Antibody Dilution: 1:1000 Secondary Antibody: Anti-rabbit HRP Secondary Antibody Dilution: 1:5000 Gene Name: TAF1B Submitted by: Thomas Moss