

Datasheet for ABIN2780051
anti-PLBD1 antibody (N-Term)[Go to Product page](#)

1 Image

Overview

Quantity:	100 µL
Target:	PLBD1
Binding Specificity:	N-Term
Reactivity:	Human, Mouse, Rabbit, Cow, Dog, Guinea Pig, Horse, Pig, Rat, Zebrafish (Danio rerio)
Host:	Rabbit
Clonality:	Polyclonal
Conjugate:	This PLBD1 antibody is un-conjugated
Application:	Western Blotting (WB)

Product Details

Immunogen:	The immunogen is a synthetic peptide corresponding to a region of Mouse
Sequence:	ESKKVEIKTV LDKNGDAYGY YNDSIKTTGW GILEIRAGYG SQVLSNEIIM
Predicted Reactivity:	Cow: 77%, Dog: 86%, Guinea Pig: 82%, Horse: 79%, Human: 79%, Mouse: 100%, Pig: 86%, Rabbit: 79%, Rat: 92%, Zebrafish: 82%
Characteristics:	This is a rabbit polyclonal antibody against 1100001H23Rik. It was validated on Western Blot.
Purification:	Affinity Purified

Target Details

Target:	PLBD1
Alternative Name:	Plbd1 (PLBD1 Products)

Target Details

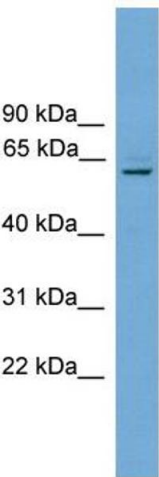
Background:	1100001H23Rik is a putative phospholipase. Alias Symbols: 1100001H23Rik Protein Size: 550
Molecular Weight:	63 kDa
Gene ID:	66857
NCBI Accession:	NM_025806 , NP_080082
UniProt:	Q8VCI0
Pathways:	Inositol Metabolic Process

Application Details

Application Notes:	Optimal working dilutions should be determined experimentally by the investigator.
Comment:	Antigen size: 550 AA
Restrictions:	For Research Use only

Handling

Format:	Liquid
Concentration:	Lot specific
Buffer:	Liquid. Purified antibody supplied in 1x PBS buffer with 0.09 % (w/v) sodium azide and 2 % sucrose.
Preservative:	Sodium azide
Precaution of Use:	This product contains Sodium azide: a POISONOUS AND HAZARDOUS SUBSTANCE which should be handled by trained staff only.
Handling Advice:	Avoid repeated freeze-thaw cycles.
Storage:	-20 °C
Storage Comment:	For short term use, store at 2-8°C up to 1 week. For long term storage, store at -20°C in small aliquots to prevent freeze-thaw cycles.



Western Blotting

Image 1. WB Suggested Anti-Plbd1 Antibody Titration: 0.2-1 ug/ml Positive Control: Mouse Heart