



[Go to Product page](#)

Datasheet for ABIN2780054  
**anti-LASS4 antibody (N-Term)**

1 Image

### Overview

Quantity:	100 µL
Target:	LASS4 (CERS4)
Binding Specificity:	N-Term
Reactivity:	Mouse, Rat, Guinea Pig
Host:	Rabbit
Clonality:	Polyclonal
Conjugate:	This LASS4 antibody is un-conjugated
Application:	Western Blotting (WB)

### Product Details

Immunogen:	The immunogen is a synthetic peptide corresponding to a region of Mouse
Sequence:	LVAVRIVFER FVALPLSRWM GVQDPIRRKI KPNPVLEKYF LRMKQCPEET
Predicted Reactivity:	Guinea Pig: 79%, Mouse: 100%, Rat: 100%
Characteristics:	This is a rabbit polyclonal antibody against LASS4. It was validated on Western Blot using a cell lysate as a positive control.
Purification:	Protein A purified

### Target Details

Target:	LASS4 (CERS4)
Alternative Name:	LASS4 ( <a href="#">CERS4 Products</a> )

## Target Details

---

Background: LASS4 is a member of LASS family. Members of this family regulate (dihydro)ceramide synthases responsible for production of sphingolipids containing different fatty acids.  
Alias Symbols: Trh1, CerS4, 2900019C14Rik, LASS4  
Protein Interaction Partner: Olig1,  
Protein Size: 393

---

Molecular Weight: 43 kDa

---

Gene ID: 67260

---

NCBI Accession: [NM\\_026058](#), [NP\\_080334](#)

---

UniProt: [Q9D6J1](#)

## Application Details

---

Application Notes: Optimal working dilutions should be determined experimentally by the investigator.

---

Comment: Antigen size: 393 AA

---

Restrictions: For Research Use only

## Handling

---

Format: Liquid

---

Concentration: Lot specific

---

Buffer: Liquid. Purified antibody supplied in 1x PBS buffer with 0.09 % (w/v) sodium azide and 2 % sucrose.

---

Preservative: Sodium azide

---

Precaution of Use: This product contains Sodium azide: a POISONOUS AND HAZARDOUS SUBSTANCE which should be handled by trained staff only.

---

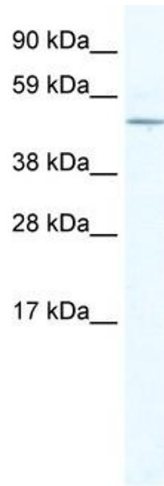
Handling Advice: Avoid repeated freeze-thaw cycles.

---

Storage: -20 °C

---

Storage Comment: For short term use, store at 2-8°C up to 1 week. For long term storage, store at -20°C in small aliquots to prevent freeze-thaw cycles.



### Western Blotting

**Image 1.** WB Suggested Anti-LASS4 Antibody Titration:  
2.5ug/ml ELISA Titer: 1:312500 Positive Control: NIH/3T3  
cell lysate