

Datasheet for ABIN2780057
anti-MRI1 antibody (C-Term)[Go to Product page](#)

1 Image

Overview

| | |
|----------------------|--|
| Quantity: | 100 µL |
| Target: | MRI1 (Mri1) |
| Binding Specificity: | C-Term |
| Reactivity: | Human, Mouse, Rat, Rabbit, Dog, Cow, Pig, Horse, Saccharomyces cerevisiae, Zebrafish (Danio rerio) |
| Host: | Rabbit |
| Clonality: | Polyclonal |
| Conjugate: | This MRI1 antibody is un-conjugated |
| Application: | Western Blotting (WB) |

Product Details

| | |
|-----------------------|---|
| Immunogen: | The immunogen is a synthetic peptide corresponding to a region of Mouse |
| Sequence: | IVAKHHGVPF YVAAPSSSCD LHLESGKEIV IEERPSQELT DLNGVRIAAQ |
| Predicted Reactivity: | Cow: 92%, Dog: 93%, Horse: 92%, Human: 86%, Mouse: 100%, Pig: 85%, Rabbit: 77%, Rat: 100%, Yeast: 92%, Zebrafish: 77% |
| Characteristics: | This is a rabbit polyclonal antibody against 2410018C20RIK. It was validated on Western Blot using a cell lysate as a positive control. |
| Purification: | Protein A purified |

Target Details

| | |
|---------|-------------|
| Target: | MRI1 (Mri1) |
|---------|-------------|

Target Details

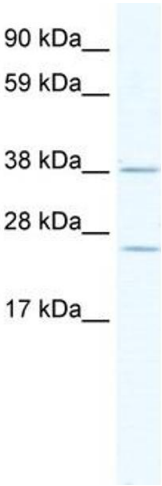
| | |
|-------------------|---|
| Alternative Name: | Mri1 (Mri1 Products) |
| Background: | <p>This protein was disclosed by the RIKEN Mouse Gene Encyclopaedia Project, a systematic approach to determining the full coding potential of the mouse genome, involves collection and sequencing of full length complementary DNAs and physical mapping of the corresponding genes to the mouse genome.</p> <p>Alias Symbols: 2410018C20Rik</p> <p>Protein Size: 369</p> |
| Molecular Weight: | 41 kDa |
| Gene ID: | 67873 |
| NCBI Accession: | NM_026423 , NP_080699 |
| UniProt: | Q9CQT1 |
| Pathways: | Methionine Biosynthetic Process |

Application Details

| | |
|--------------------|--|
| Application Notes: | Optimal working dilutions should be determined experimentally by the investigator. |
| Comment: | Antigen size: 369 AA |
| Restrictions: | For Research Use only |

Handling

| | |
|--------------------|---|
| Format: | Liquid |
| Concentration: | Lot specific |
| Buffer: | Liquid. Purified antibody supplied in 1x PBS buffer with 0.09 % (w/v) sodium azide and 2 % sucrose. |
| Preservative: | Sodium azide |
| Precaution of Use: | This product contains Sodium azide: a POISONOUS AND HAZARDOUS SUBSTANCE which should be handled by trained staff only. |
| Handling Advice: | Avoid repeated freeze-thaw cycles. |
| Storage: | -20 °C |
| Storage Comment: | For short term use, store at 2-8°C up to 1 week. For long term storage, store at -20°C in small aliquots to prevent freeze-thaw cycles. |



Western Blotting

Image 1. WB Suggested Anti-Mri1 Antibody Titration: 2.5ug/ml ELISA Titer: 1:1562500 Positive Control: NIH/3T3 cell lysate