

Datasheet for ABIN2780058
anti-MRI1 antibody (N-Term)[Go to Product page](#)

1 Image

Overview

Quantity:	100 µL
Target:	MRI1 (Mri1)
Binding Specificity:	N-Term
Reactivity:	Human, Mouse, Rat, Rabbit, Dog, Cow, Pig, Horse
Host:	Rabbit
Clonality:	Polyclonal
Conjugate:	This MRI1 antibody is un-conjugated
Application:	Western Blotting (WB)

Product Details

Immunogen:	The immunogen is a synthetic peptide directed towards the N terminal region of mouse 2410018C20RIK
Sequence:	LGQVAAQEAE REGATEETVR ERVIRFAEDM LEKDLKDNRS IGDLGARHLL
Predicted Reactivity:	Cow: 93%, Dog: 79%, Horse: 86%, Human: 86%, Mouse: 100%, Pig: 93%, Rabbit: 79%, Rat: 86%
Characteristics:	This is a rabbit polyclonal antibody against 2410018C20RIK. It was validated on Western Blot using a cell lysate as a positive control.
Purification:	Protein A purified

Target Details

Target:	MRI1 (Mri1)
---------	-------------

Target Details

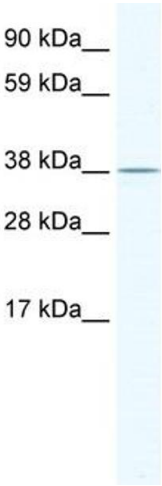
Alternative Name:	Mri1 (Mri1 Products)
Background:	<p>This protein was disclosed by the RIKEN Mouse Gene Encyclopaedia Project, a systematic approach to determining the full coding potential of the mouse genome, involves collection and sequencing of full length complementary DNAs and physical mapping of the corresponding genes to the mouse genome.</p> <p>Alias Symbols: 2410018C20Rik</p> <p>Protein Size: 369</p>
Molecular Weight:	41 kDa
Gene ID:	67873
NCBI Accession:	NM_026423 , NP_080699
UniProt:	Q9CQT1
Pathways:	Methionine Biosynthetic Process

Application Details

Application Notes:	Optimal working dilutions should be determined experimentally by the investigator.
Comment:	Antigen size: 369 AA
Restrictions:	For Research Use only

Handling

Format:	Liquid
Concentration:	Lot specific
Buffer:	Liquid. Purified antibody supplied in 1x PBS buffer with 0.09 % (w/v) sodium azide and 2 % sucrose.
Preservative:	Sodium azide
Precaution of Use:	This product contains Sodium azide: a POISONOUS AND HAZARDOUS SUBSTANCE which should be handled by trained staff only.
Handling Advice:	Avoid repeated freeze-thaw cycles.
Storage:	-20 °C
Storage Comment:	For short term use, store at 2-8°C up to 1 week. For long term storage, store at -20°C in small aliquots to prevent freeze-thaw cycles.



Western Blotting

Image 1. WB Suggested Anti-Mri1 Antibody Titration:
2.5ug/ml ELISA Titer: 1:1562500 Positive Control: NIH/3T3
cell lysate