

Datasheet for ABIN2780076
anti-SPZ1 antibody (C-Term)[Go to Product page](#)

1 Image

Overview

Quantity:	100 µL
Target:	SPZ1
Binding Specificity:	C-Term
Reactivity:	Mouse
Host:	Rabbit
Clonality:	Polyclonal
Conjugate:	This SPZ1 antibody is un-conjugated
Application:	Western Blotting (WB)

Product Details

Immunogen:	The immunogen is a synthetic peptide directed towards the C terminal region of mouse SPZ1
Sequence:	KKCPKLAEAD KTDAFKHHTTR ATEGTIRKPK ILRSPDVCFT KKARNNRFNA
Predicted Reactivity:	Mouse: 100%
Characteristics:	This is a rabbit polyclonal antibody against SPZ1. It was validated on Western Blot using a cell lysate as a positive control.
Purification:	Protein A purified

Target Details

Target:	SPZ1
Alternative Name:	SPZ1 (SPZ1 Products)

Target Details

Background: Spz1, a novel bHLH-Zip protein, is specifically expressed in testis.
Alias Symbols: AI429130, 1700027M20Rik
Protein Interaction Partner: Ppp1cc,
Protein Size: 378

Molecular Weight: 42 kDa

Gene ID: 79401

NCBI Accession: [NM_030237](#), [NP_084513](#)

UniProt: [Q3V487](#)

Pathways: [MAPK Signaling](#)

Application Details

Application Notes: Optimal working dilution should be determined by the investigator.

Comment: Antigen size: 378 AA

Restrictions: For Research Use only

Handling

Format: Liquid

Concentration: Lot specific

Buffer: Liquid. Purified antibody supplied in 1x PBS buffer with 0.09 % (w/v) sodium azide and 2 % sucrose.

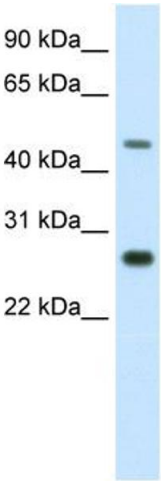
Preservative: Sodium azide

Precaution of Use: This product contains Sodium azide: a POISONOUS AND HAZARDOUS SUBSTANCE which should be handled by trained staff only.

Handling Advice: Avoid repeated freeze-thaw cycles.

Storage: -20 °C

Storage Comment: For short term use, store at 2-8°C up to 1 week. For long term storage, store at -20°C in small aliquots to prevent freeze-thaw cycles.



Western Blotting

Image 1. WB Suggested Anti-SPZ1 Antibody Titration:
2.5ug/ml ELISA Titer: 1:312500 Positive Control: NIH/3T3
cell lysate