



Datasheet for ABIN2780089
anti-SMARCA1 antibody (N-Term)



[Go to Product page](#)

2 Images

Overview

Quantity:	100 µL
Target:	SMARCA1
Binding Specificity:	N-Term
Reactivity:	Mouse, Rat
Host:	Rabbit
Clonality:	Polyclonal
Conjugate:	This SMARCA1 antibody is un-conjugated
Application:	Western Blotting (WB), Chromatin Immunoprecipitation (ChIP)

Product Details

Immunogen:	The immunogen is a synthetic peptide directed towards the N terminal region of mouse SMARCA1
Sequence:	VAVSDARATV VVVEDEQPGP STFKEEGAAA AATEGTTATE KGEKKEKITS
Predicted Reactivity:	Mouse: 100%, Rat: 100%
Characteristics:	This is a rabbit polyclonal antibody against SMARCA1. It was validated on Western Blot using a cell lysate as a positive control.
Purification:	Protein A purified

Target Details

Target:	SMARCA1
---------	---------

Target Details

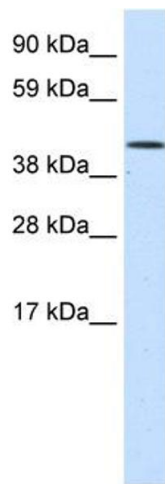
Alternative Name:	SMARCA1 (SMARCA1 Products)
Background:	CDNA library was prepared and sequenced in Mouse Genome Encyclopedia Project of Genome Exploration Research Group in Riken Genomic Sciences Center and Genome Science Laboratory in RIKEN. Alias Symbols: Snf2l, 5730494M04Rik Protein Interaction Partner: Eed, Ewsr1, Baz1a, Protein Size: 381
Molecular Weight:	43 kDa
Gene ID:	93761
NCBI Accession:	NM_053123
UniProt:	Q8BS67
Pathways:	Chromatin Binding

Application Details

Application Notes:	Optimal working dilutions should be determined experimentally by the investigator.
Comment:	Antigen size: 381 AA
Restrictions:	For Research Use only

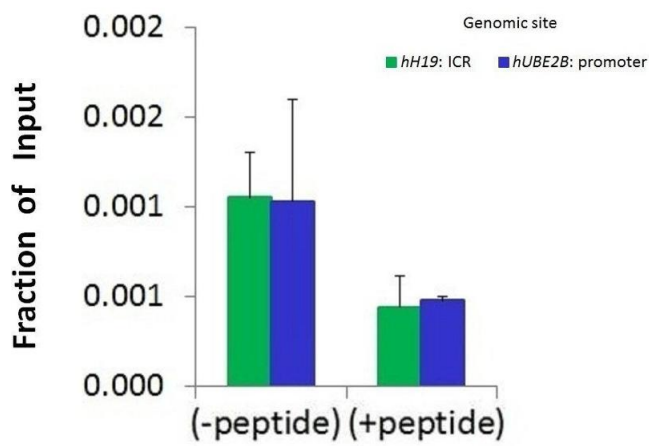
Handling

Format:	Liquid
Concentration:	Lot specific
Buffer:	Liquid. Purified antibody supplied in 1x PBS buffer with 0.09 % (w/v) sodium azide and 2 % sucrose.
Preservative:	Sodium azide
Precaution of Use:	This product contains Sodium azide: a POISONOUS AND HAZARDOUS SUBSTANCE which should be handled by trained staff only.
Handling Advice:	Avoid repeated freeze-thaw cycles.
Storage:	-20 °C
Storage Comment:	For short term use, store at 2-8°C up to 1 week. For long term storage, store at -20°C in small aliquots to prevent freeze-thaw cycles.



Western Blotting

Image 1. WB Suggested Anti-SMARCA1 Antibody Titration: 1.25ug/ml ELISA Titer: 1:312500 Positive Control: NIH/3T3 cell lysate



Chromatin Immunoprecipitation

Image 2. Chromatin Immunoprecipitation (ChIP) Using SMARCA1 antibody - N-terminal region and HCT116 Cells