

Datasheet for ABIN2780091  
**anti-VSX1 antibody (C-Term)**



[Go to Product page](#)

1 Image

## Overview

|                      |                                     |
|----------------------|-------------------------------------|
| Quantity:            | 100 µL                              |
| Target:              | VSX1                                |
| Binding Specificity: | C-Term                              |
| Reactivity:          | Mouse, Rat                          |
| Host:                | Rabbit                              |
| Clonality:           | Polyclonal                          |
| Conjugate:           | This VSX1 antibody is un-conjugated |
| Application:         | Western Blotting (WB)               |

## Product Details

|                       |   |
|-----------------------|---|
| Immunogen:            | The immunogen is a synthetic peptide directed towards the C-terminal region of Mouse Vsx1 |
| Sequence:             | TGMRKPESED KLAGLWEFDH LKKGANKDED GPERGPDETT QNPENSLEDV                                    |
| Predicted Reactivity: | Mouse: 100%, Rat: 100%  |
| Characteristics:      | This is a rabbit polyclonal antibody against Vsx1. It was validated on Western Blot.      |
| Purification:         | Affinity Purified   |

## Target Details

|                   |  |
|-------------------|--|
| Target:           | VSX1   |
| Alternative Name: | Vsx1 ( <a href="#">VSX1 Products</a> )   |
| Background:       | Vsx1 binds to the 37-bp core of the locus control region (LCR) of the red/green visual pigment |

## Target Details

gene cluster. Vsx1 may regulate the activity of the LCR and the cone opsin genes at earlier stages of development.

Alias Symbols: CHX10-like

Protein Interaction Partner: Nkx2-1,

Protein Size: 363

Molecular Weight: 39 kDa

Gene ID: 114889

NCBI Accession: [NM\\_054068](#), [NP\\_473409](#)

UniProt: [Q91V10](#)

## Application Details

Application Notes: Optimal working dilutions should be determined experimentally by the investigator.

Comment: Antigen size: 363 AA

Restrictions: For Research Use only

## Handling

Format: Liquid

Concentration: Lot specific

Buffer: Liquid. Purified antibody supplied in 1x PBS buffer with 0.09 % (w/v) sodium azide and 2 % sucrose.

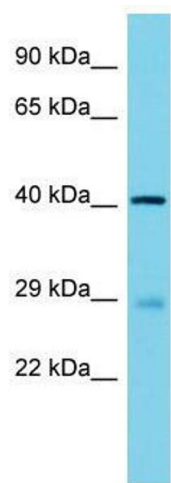
Preservative: Sodium azide

Precaution of Use: This product contains Sodium azide: a POISONOUS AND HAZARDOUS SUBSTANCE which should be handled by trained staff only.

Handling Advice: Avoid repeated freeze-thaw cycles.

Storage: -20 °C

Storage Comment: For short term use, store at 2-8°C up to 1 week. For long term storage, store at -20°C in small aliquots to prevent freeze-thaw cycles.



Western Blotting

**Image 1.** Host: Rabbit Target Name: Vsx1 Sample Type: Mouse Testis lysates Antibody Dilution: 1.0ug/ml