

Datasheet for ABIN2780092  
**anti-VSX1 antibody (N-Term)**



[Go to Product page](#)

1 Image

## Overview

Quantity:	100 µL
Target:	VSX1
Binding Specificity:	N-Term
Reactivity:	Mouse, Rat
Host:	Rabbit
Clonality:	Polyclonal
Conjugate:	This VSX1 antibody is un-conjugated
Application:	Western Blotting (WB)

## Product Details

Immunogen:	The immunogen is a synthetic peptide corresponding to a region of Mouse
Sequence:	RSRSRALAPG CPPTGSRLRS FAINDLLGLE ADLPTPAEPG LRSNSGDPAE
Predicted Reactivity:	Mouse: 100%, Rat: 100%
Characteristics:	This is a rabbit polyclonal antibody against Vsx1. It was validated on Western Blot.
Purification:	Affinity Purified

## Target Details

Target:	VSX1
Alternative Name:	Vsx1 ( <a href="#">VSX1 Products</a> )
Background:	Vsx1 binds to the 37-bp core of the locus control region (LCR) of the red/green visual pigment

## Target Details

---

gene cluster. Vsx1 may regulate the activity of the LCR and the cone opsin genes at earlier stages of development.

Alias Symbols: CHX10-like

Protein Interaction Partner: Nkx2-1,

Protein Size: 363

---

Molecular Weight: 39 kDa

---

Gene ID: 114889

---

NCBI Accession: [NM\\_054068](#), [NP\\_473409](#)

---

UniProt: [Q91V10](#)

## Application Details

---

Application Notes: Optimal working dilutions should be determined experimentally by the investigator.

---

Comment: Antigen size: 363 AA

---

Restrictions: For Research Use only

## Handling

---

Format: Liquid

---

Concentration: Lot specific

---

Buffer: Liquid. Purified antibody supplied in 1x PBS buffer with 0.09 % (w/v) sodium azide and 2 % sucrose.

---

Preservative: Sodium azide

---

Precaution of Use: This product contains Sodium azide: a POISONOUS AND HAZARDOUS SUBSTANCE which should be handled by trained staff only.

---

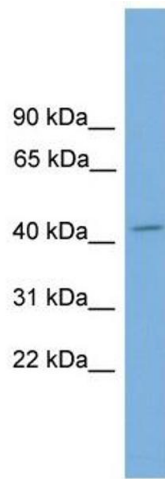
Handling Advice: Avoid repeated freeze-thaw cycles.

---

Storage: -20 °C

---

Storage Comment: For short term use, store at 2-8°C up to 1 week. For long term storage, store at -20°C in small aliquots to prevent freeze-thaw cycles.



### Western Blotting

**Image 1.** WB Suggested Anti-Vsx1 Antibody Titration: 0.2-1 ug/ml Positive Control: Mouse Spleen