

Datasheet for ABIN2780101
anti-RFXAP antibody (N-Term)



[Go to Product page](#)

1 Image

Overview

Quantity:	100 µL
Target:	RFXAP
Binding Specificity:	N-Term
Reactivity:	Human, Mouse, Guinea Pig, Cow, Dog, Horse, Rabbit, Rat
Host:	Rabbit
Clonality:	Polyclonal
Conjugate:	This RFXAP antibody is un-conjugated
Application:	Western Blotting (WB)

Product Details

Immunogen:	The immunogen is a synthetic peptide corresponding to a region of Mouse
Sequence:	DAEDEAGDDD ADLLDTSIPA GGGESAASPE ELEDEDAEGG GAARRRGSKT
Predicted Reactivity:	Cow: 79%, Dog: 79%, Guinea Pig: 86%, Horse: 79%, Human: 79%, Mouse: 100%, Rabbit: 79%, Rat: 93%
Characteristics:	This is a rabbit polyclonal antibody against Rfxap. It was validated on Western Blot.
Purification:	Affinity Purified

Target Details

Target:	RFXAP
Alternative Name:	Rfxap (RFXAP Products)

Target Details

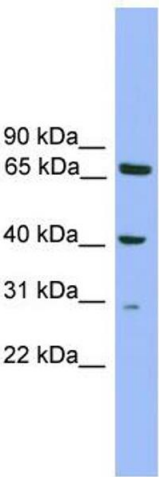
Background:	The function of this protein remains unknown. Alias Symbols: 5730495K23Rik Protein Interaction Partner: Ewsr1, Protein Size: 231
Molecular Weight:	25 kDa
Gene ID:	170767
NCBI Accession:	NM_133231 , NP_573494
UniProt:	Q8VCG9

Application Details

Application Notes:	Optimal working dilutions should be determined experimentally by the investigator.
Comment:	Antigen size: 231 AA
Restrictions:	For Research Use only

Handling

Format:	Liquid
Concentration:	Lot specific
Buffer:	Liquid. Purified antibody supplied in 1x PBS buffer with 0.09 % (w/v) sodium azide and 2 % sucrose.
Preservative:	Sodium azide
Precaution of Use:	This product contains Sodium azide: a POISONOUS AND HAZARDOUS SUBSTANCE which should be handled by trained staff only.
Handling Advice:	Avoid repeated freeze-thaw cycles.
Storage:	-20 °C
Storage Comment:	For short term use, store at 2-8°C up to 1 week. For long term storage, store at -20°C in small aliquots to prevent freeze-thaw cycles.



Western Blotting

Image 1. WB Suggested Anti-Rfxap Antibody Titration: 0.2-1 ug/ml ELISA Titer: 1:312500 Positive Control: Mouse Kidney