

Datasheet for ABIN2780118  
**anti-GLIS1 antibody (N-Term)**



[Go to Product page](#)

1 Image

## Overview

Quantity:	100 µL
Target:	GLIS1
Binding Specificity:	N-Term
Reactivity:	Mouse, Cow, Dog, Pig, Rabbit, Rat
Host:	Rabbit
Clonality:	Polyclonal
Conjugate:	This GLIS1 antibody is un-conjugated
Application:	Western Blotting (WB)

## Product Details

Immunogen:	The immunogen is a synthetic peptide corresponding to a region of Mouse
Sequence:	DKRPKEAPGA PGQGRGPVSL GAHMAFRIAV SGGGCGDGNP LDLLPRLPVP
Predicted Reactivity:	Cow: 79%, Dog: 91%, Mouse: 100%, Pig: 79%, Rabbit: 86%, Rat: 93%
Characteristics:	This is a rabbit polyclonal antibody against Glis1. It was validated on Western Blot.
Purification:	Affinity Purified

## Target Details

Target:	GLIS1
Alternative Name:	Glis1 ( <a href="#">GLIS1 Products</a> )
Background:	Glis1 acts as both a repressor and activator of transcription. Glis1 binds to the consensus

Target Details

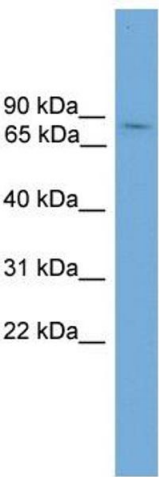
	sequence 5'-GACCACCCAC-3'. Alias Symbols: Gli5, Gli6, GliH1 Protein Size: 789
Molecular Weight:	84 kDa
Gene ID:	230587
NCBI Accession:	<a href="#">NM_147221</a> , <a href="#">NP_671754</a>
UniProt:	<a href="#">Q8K1M4</a>

Application Details

Application Notes:	Optimal working dilutions should be determined experimentally by the investigator.
Comment:	Antigen size: 789 AA
Restrictions:	For Research Use only

Handling

Format:	Liquid
Concentration:	Lot specific
Buffer:	Liquid. Purified antibody supplied in 1x PBS buffer with 0.09 % (w/v) sodium azide and 2 % sucrose.
Preservative:	Sodium azide
Precaution of Use:	This product contains Sodium azide: a POISONOUS AND HAZARDOUS SUBSTANCE which should be handled by trained staff only.
Handling Advice:	Avoid repeated freeze-thaw cycles.
Storage:	-20 °C
Storage Comment:	For short term use, store at 2-8°C up to 1 week. For long term storage, store at -20°C in small aliquots to prevent freeze-thaw cycles.



Western Blotting

**Image 1.** WB Suggested Anti-Glis1 Antibody Titration: 0.2-1 ug/ml Positive Control: Mouse Kidney