



[Go to Product page](#)

Datasheet for ABIN2780127

anti-SKOR1 antibody (Middle Region)

1 Image

Overview

Quantity:	100 µL
Target:	SKOR1
Binding Specificity:	Middle Region
Reactivity:	Human, Mouse, Rat, Cow, Dog, Guinea Pig, Horse, Rabbit
Host:	Rabbit
Clonality:	Polyclonal
Conjugate:	This SKOR1 antibody is un-conjugated
Application:	Western Blotting (WB)

Product Details

Immunogen:	The immunogen is a synthetic peptide directed towards the middle region of mouse Lbxcor1
Sequence:	EPDKEDNHST TADDLETRKS FSDQRSVSQP SPANTDRGED GLTLDVTGTQ
Predicted Reactivity:	Cow: 93%, Dog: 93%, Guinea Pig: 93%, Horse: 93%, Human: 86%, Mouse: 100%, Rabbit: 86%, Rat: 100%
Characteristics:	This is a rabbit polyclonal antibody against Lbxcor1. It was validated on Western Blot.
Purification:	Affinity Purified

Target Details

Target:	SKOR1
Alternative Name:	Lbxcor1 (SKOR1 Products)

Target Details

Background: Lbxcor1 inhibits BMP signaling. Lbxcor1 acts as a transcriptional corepressor of LBX1.
Alias Symbols: 4931440A04, AV273001, C230094B15Rik, Corl1, Lbxcor1
Protein Interaction Partner: Hdac1, Zbtb16, Tle1, Pcbp2, Lbx1,
Protein Size: 964

Molecular Weight: 100 kDa

Gene ID: 207667

NCBI Accession: [NM_172446](#), [NP_766034](#)

UniProt: [Q8BX46](#)

Application Details

Application Notes: Optimal working dilutions should be determined experimentally by the investigator.

Comment: Antigen size: 964 AA

Restrictions: For Research Use only

Handling

Format: Liquid

Concentration: Lot specific

Buffer: Liquid. Purified antibody supplied in 1x PBS buffer with 0.09 % (w/v) sodium azide and 2 % sucrose.

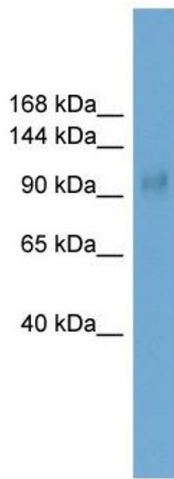
Preservative: Sodium azide

Precaution of Use: This product contains Sodium azide: a POISONOUS AND HAZARDOUS SUBSTANCE which should be handled by trained staff only.

Handling Advice: Avoid repeated freeze-thaw cycles.

Storage: -20 °C

Storage Comment: For short term use, store at 2-8°C up to 1 week. For long term storage, store at -20°C in small aliquots to prevent freeze-thaw cycles.



Western Blotting

Image 1. WB Suggested Anti-Lbxcor1 Antibody Titration:
0.2-1 ug/ml Positive Control: Mouse Kidney