



[Go to Product page](#)

Datasheet for ABIN2780131  
**anti-HSF3 antibody (Middle Region)**

1 Image

Overview

Quantity:	100 µL
Target:	HSF3
Binding Specificity:	Middle Region
Reactivity:	Mouse, Rat
Host:	Rabbit
Clonality:	Polyclonal
Conjugate:	This HSF3 antibody is un-conjugated
Application:	Western Blotting (WB)

Product Details

Immunogen:	The immunogen is a synthetic peptide corresponding to a region of Mouse
Sequence:	EDKYKSLLDL R VMPILKESKK LISSGDQPSG DDGEHPKVPV QDKPMNEESL
Predicted Reactivity:	Mouse: 100%, Rat: 79%
Characteristics:	This is a rabbit polyclonal antibody against B230358A15Rik. It was validated on Western Blot.
Purification:	Affinity Purified

Target Details

Target:	HSF3
Alternative Name:	B230358A15Rik ( <a href="#">HSF3 Products</a> )
Background:	The function of this protein remains unknown.

## Target Details

---

Alias Symbols: HSF 3, mHSF3, HSTF 3, B230358A15Rik, RP23-348N10.1

Protein Size: 311

---

Molecular Weight: 36 kDa

---

Gene ID: 245525

---

NCBI Accession: [NM\\_172931](#), [NP\\_766519](#)

---

UniProt: [Q8BL67](#)

## Application Details

---

Application Notes: Optimal working dilutions should be determined experimentally by the investigator.

---

Comment: Antigen size: 311 AA

---

Restrictions: For Research Use only

## Handling

---

Format: Liquid

---

Concentration: Lot specific

---

Buffer: Liquid. Purified antibody supplied in 1x PBS buffer with 0.09 % (w/v) sodium azide and 2 % sucrose.

---

Preservative: Sodium azide

---

Precaution of Use: This product contains Sodium azide: a POISONOUS AND HAZARDOUS SUBSTANCE which should be handled by trained staff only.

---

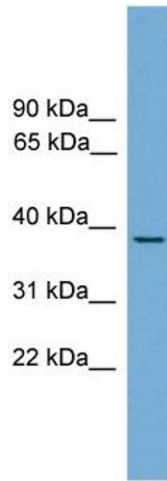
Handling Advice: Avoid repeated freeze-thaw cycles.

---

Storage: -20 °C

---

Storage Comment: For short term use, store at 2-8°C up to 1 week. For long term storage, store at -20°C in small aliquots to prevent freeze-thaw cycles.



### Western Blotting

**Image 1.** WB Suggested Anti-B230358A15Rik Antibody

Titration: 0.2-1 ug/ml ELISA Titer: 1:62500 Positive Control:

Mouse liver