

Datasheet for ABIN2780137
anti-HELT antibody (C-Term)[Go to Product page](#)

1 Image

Overview

Quantity:	100 µL
Target:	HELT
Binding Specificity:	C-Term
Reactivity:	Mouse, Human, Rat, Cow, Guinea Pig, Horse, Rabbit
Host:	Rabbit
Clonality:	Polyclonal
Conjugate:	This HELT antibody is un-conjugated
Application:	Western Blotting (WB)

Product Details

Immunogen:	The immunogen is a synthetic peptide directed towards the C-terminal region of Mouse Helt
Sequence:	LPEPDFSYQL HAASPEFPGH SPGEATMFPQ GATPGSFPPW PGAARSPALP
Predicted Reactivity:	Cow: 85%, Guinea Pig: 77%, Horse: 85%, Human: 85%, Mouse: 100%, Rabbit: 77%, Rat: 93%
Characteristics:	This is a rabbit polyclonal antibody against Helt. It was validated on Western Blot.
Purification:	Affinity Purified

Target Details

Target:	HELT
Alternative Name:	Helt (HELT Products)
Background:	Helt is a transcriptional repressor which binds preferentially to the canonical E box sequence 5'-

Target Details

CACGCG-3' and is required for the development of GABAergic neurons.

Alias Symbols: A830086M02, Hesl, Mgn, megane

Protein Interaction Partner: Helt, Hey2, Hes5,

Protein Size: 240

Molecular Weight: 27 kDa

Gene ID: 234219

NCBI Accession: [NM_173789](#), [NP_776150](#)

UniProt: [Q7TS99](#)

Pathways: [Feeding Behaviour](#)

Application Details

Application Notes: Optimal working dilutions should be determined experimentally by the investigator.

Comment: Antigen size: 240 AA

Restrictions: For Research Use only

Handling

Format: Liquid

Concentration: Lot specific

Buffer: Liquid. Purified antibody supplied in 1x PBS buffer with 0.09 % (w/v) sodium azide and 2 % sucrose.

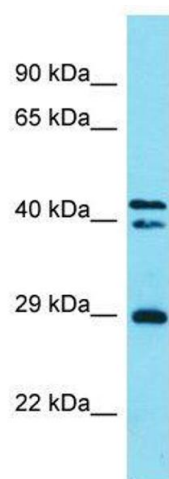
Preservative: Sodium azide

Precaution of Use: This product contains Sodium azide: a POISONOUS AND HAZARDOUS SUBSTANCE which should be handled by trained staff only.

Handling Advice: Avoid repeated freeze-thaw cycles.

Storage: -20 °C

Storage Comment: For short term use, store at 2-8°C up to 1 week. For long term storage, store at -20°C in small aliquots to prevent freeze-thaw cycles.



Western Blotting

Image 1. Host: Rabbit Target Name: Helt Sample Type: Mouse Stomach lysates Antibody Dilution: 1.0ug/ml