



[Go to Product page](#)

Datasheet for ABIN2780140  
**anti-CPHX antibody (N-Term)**

1 Image

### Overview

Quantity:	100 µL
Target:	CPHX
Binding Specificity:	N-Term
Reactivity:	Mouse
Host:	Rabbit
Clonality:	Polyclonal
Conjugate:	This CPHX antibody is un-conjugated
Application:	Western Blotting (WB)

### Product Details

Immunogen:	The immunogen is a synthetic peptide directed towards the N terminal region of mouse C330003B14RIK
Sequence:	MLSKNFPGAP ETKDNRSKAR KRYGSRNSKP RHKFSRDELK RLKQEFAYAP
Predicted Reactivity:	Mouse: 100%
Characteristics:	This is a rabbit polyclonal antibody against C330003B14RIK. It was validated on Western Blot using a cell lysate as a positive control.
Purification:	Protein A purified

### Target Details

Target:	CPHX
---------	------

## Target Details

---

Alternative Name:	C330003B14RIK ( <a href="#">CPHX Products</a> )
Background:	The function remains unknown. Alias Symbols: Eso-1, C80129, AU019881, AU023336, C330003B14Rik Protein Size: 182
Molecular Weight:	20 kDa
Gene ID:	105594
NCBI Accession:	<a href="#">NM_175342</a> , <a href="#">NP_780551</a>
UniProt:	<a href="#">Q8BX39</a>

## Application Details

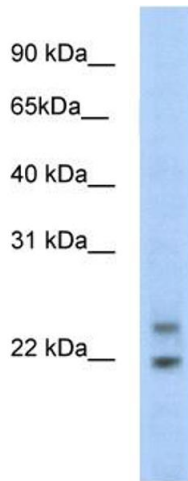
---

Application Notes:	Optimal working dilution should be determined by the investigator.
Comment:	Antigen size: 182 AA
Restrictions:	For Research Use only

## Handling

---

Format:	Liquid
Concentration:	Lot specific
Buffer:	Liquid. Purified antibody supplied in 1x PBS buffer with 0.09 % (w/v) sodium azide and 2 % sucrose.
Preservative:	Sodium azide
Precaution of Use:	This product contains Sodium azide: a POISONOUS AND HAZARDOUS SUBSTANCE which should be handled by trained staff only.
Handling Advice:	Avoid repeated freeze-thaw cycles.
Storage:	-20 °C
Storage Comment:	For short term use, store at 2-8°C up to 1 week. For long term storage, store at -20°C in small aliquots to prevent freeze-thaw cycles.



### Western Blotting

**Image 1.** WB Suggested Anti-C330003B14RIK Antibody

Titration: 5.0ug/ml Positive Control: SP2/0 cell lysate