

Datasheet for ABIN2780155
anti-DP2 antibody (C-Term)



[Go to Product page](#)

1 Image

Overview

Quantity:	100 µL
Target:	DP2 (TFDP2)
Binding Specificity:	C-Term
Reactivity:	Human, Mouse, Rat, Cow, Horse, Dog, Pig
Host:	Rabbit
Clonality:	Polyclonal
Conjugate:	This DP2 antibody is un-conjugated
Application:	Western Blotting (WB)

Product Details

Immunogen:	The immunogen is a synthetic peptide corresponding to a region of Mouse
Sequence:	GLLLNSTQSV SNLDPTTGAT VPQSSVNQGL CLDAEVALAT GQLPASNSHQ
Predicted Reactivity:	Cow: 92%, Dog: 92%, Horse: 92%, Human: 92%, Mouse: 100%, Pig: 92%, Rat: 100%
Characteristics:	This is a rabbit polyclonal antibody against Tfdp2. It was validated on Western Blot.
Purification:	Affinity Purified

Target Details

Target:	DP2 (TFDP2)
Alternative Name:	Tfdp2 (TFDP2 Products)
Background:	The function of this protein remains unknown.

Target Details

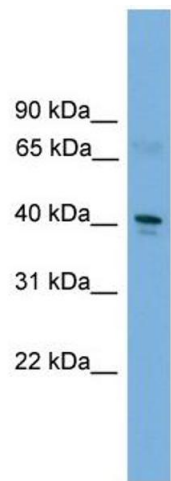
	Alias Symbols: A330080J22Rik, DP-3, DP3, 1110029I05Rik Protein Interaction Partner: Tsc22d3, E2f2, Dmrtc2, Tlx3, Zfp275, E2f1, Protein Size: 385
Molecular Weight:	43 kDa
Gene ID:	211586
NCBI Accession:	NM_178667 , NP_848782
UniProt:	Q8BHD2
Pathways:	Cell Division Cycle , Mitotic G1-G1/S Phases

Application Details

Application Notes:	Optimal working dilutions should be determined experimentally by the investigator.
Comment:	Antigen size: 385 AA
Restrictions:	For Research Use only

Handling

Format:	Liquid
Concentration:	Lot specific
Buffer:	Liquid. Purified antibody supplied in 1x PBS buffer with 0.09 % (w/v) sodium azide and 2 % sucrose.
Preservative:	Sodium azide
Precaution of Use:	This product contains Sodium azide: a POISONOUS AND HAZARDOUS SUBSTANCE which should be handled by trained staff only.
Handling Advice:	Avoid repeated freeze-thaw cycles.
Storage:	-20 °C
Storage Comment:	For short term use, store at 2-8°C up to 1 week. For long term storage, store at -20°C in small aliquots to prevent freeze-thaw cycles.



Western Blotting

Image 1. WB Suggested Anti-Tfdp2 Antibody Titration: 0.2-1 ug/ml Positive Control: Mouse Uterus