

Datasheet for ABIN2780169
anti-FOXE1 antibody (C-Term)



[Go to Product page](#)

1 Image

Overview

Quantity:	100 µL
Target:	FOXE1
Binding Specificity:	C-Term
Reactivity:	Mouse, Rat, Cow, Guinea Pig, Rabbit
Host:	Rabbit
Clonality:	Polyclonal
Conjugate:	This FOXE1 antibody is un-conjugated
Application:	Western Blotting (WB)

Product Details

Immunogen:	The immunogen is a synthetic peptide corresponding to a region of Mouse
Sequence:	FYGRTPSPGQF GAALGPCYNP GGQLGAGGGG AYHSRHATAY PGAVDRFVSA
Predicted Reactivity:	Cow: 86%, Guinea Pig: 79%, Mouse: 100%, Rabbit: 79%, Rat: 100%
Characteristics:	This is a rabbit polyclonal antibody against Foxe1. It was validated on Western Blot.
Purification:	Affinity Purified

Target Details

Target:	FOXE1
Alternative Name:	Foxe1 (FOXE1 Products)
Background:	Foxe1 is a probable transcription factor. Foxe1 could be involved in thyroid gland

Target Details

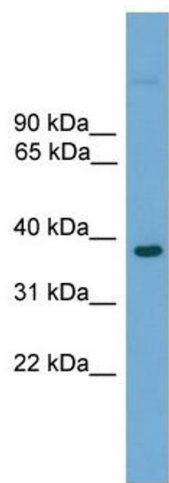
	organogenesis. Alias Symbols: Titf2 Protein Size: 371
Molecular Weight:	38 kDa
Gene ID:	110805
NCBI Accession:	NM_183298 , NP_899121
UniProt:	Q8R2I0

Application Details

Application Notes:	Optimal working dilutions should be determined experimentally by the investigator.
Comment:	Antigen size: 371 AA
Restrictions:	For Research Use only

Handling

Format:	Liquid
Concentration:	Lot specific
Buffer:	Liquid. Purified antibody supplied in 1x PBS buffer with 0.09 % (w/v) sodium azide and 2 % sucrose.
Preservative:	Sodium azide
Precaution of Use:	This product contains Sodium azide: a POISONOUS AND HAZARDOUS SUBSTANCE which should be handled by trained staff only.
Handling Advice:	Avoid repeated freeze-thaw cycles.
Storage:	-20 °C
Storage Comment:	For short term use, store at 2-8°C up to 1 week. For long term storage, store at -20°C in small aliquots to prevent freeze-thaw cycles.



Western Blotting

Image 1. WB Suggested Anti-Foxe1 Antibody Titration: 0.2-1 ug/ml Positive Control: Mouse liver