



[Go to Product page](#)

Datasheet for ABIN2780197

## anti-Gm5864 antibody (Middle Region)

### 1 Image

#### Overview

Quantity:	100 µL
Target:	Gm5864 (GM5864)
Binding Specificity:	Middle Region
Reactivity:	Mouse
Host:	Rabbit
Clonality:	Polyclonal
Conjugate:	This Gm5864 antibody is un-conjugated
Application:	Western Blotting (WB)

#### Product Details

Immunogen:	The immunogen is a synthetic peptide directed towards the middle region of human LOC545743
Sequence:	ISNFNNAVES KTSASGKEAN SRPLVQPHPS GSLIIDKESE VYKMLQEKQE
Predicted Reactivity:	Mouse: 86%
Characteristics:	This is a rabbit polyclonal antibody against LOC545743. It was validated on Western Blot.
Purification:	Affinity Purified

#### Target Details

Target:	Gm5864 (GM5864)
Alternative Name:	Gm5864 ( <a href="#">GM5864 Products</a> )

## Target Details

---

Background: The function of this protein remains unknown.  
Alias Symbols: EG545743  
Protein Size: 304

---

Molecular Weight: 33 kDa

---

Gene ID: 545743

---

NCBI Accession: [XM\\_620179](#), [XP\\_620179](#)

---

## Application Details

---

Application Notes: Optimal working dilution should be determined by the investigator.

---

Comment: Antigen size: 304 AA

---

Restrictions: For Research Use only

---

## Handling

---

Format: Liquid

---

Concentration: Lot specific

---

Buffer: Liquid. Purified antibody supplied in 1x PBS buffer with 0.09 % (w/v) sodium azide and 2 % sucrose.

---

Preservative: Sodium azide

---

Precaution of Use: This product contains Sodium azide: a POISONOUS AND HAZARDOUS SUBSTANCE which should be handled by trained staff only.

---

Handling Advice: Avoid repeated freeze-thaw cycles.

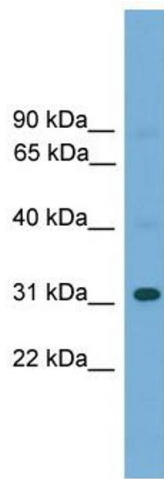
---

Storage: -20 °C

---

Storage Comment: For short term use, store at 2-8°C up to 1 week. For long term storage, store at -20°C in small aliquots to prevent freeze-thaw cycles.

---



### Western Blotting

**Image 1.** WB Suggested Anti-Gm5864 Antibody Titration:  
0.2-1 ug/ml Positive Control: Mouse Liver