

Datasheet for ABIN2780199

anti-Glypican 3 antibody (Middle Region)**3** Images**1** Publication[Go to Product page](#)

Overview

Quantity:	100 µL
Target:	Glypican 3 (GPC3)
Binding Specificity:	Middle Region
Reactivity:	Human, Rat, Mouse, Dog, Rabbit, Cow, Guinea Pig, Horse
Host:	Rabbit
Clonality:	Polyclonal
Conjugate:	This Glypican 3 antibody is un-conjugated
Application:	Western Blotting (WB), Immunohistochemistry (IHC)

Product Details

Immunogen:	The immunogen is a synthetic peptide directed towards the middle region of human GPC3
Sequence:	FSTIHDSIQY VQKNAGKLTT TIGKLCAHSQ QRQYRSAYYP EDLFIDKKVL
Predicted Reactivity:	Cow: 100%, Dog: 100%, Guinea Pig: 100%, Horse: 100%, Human: 100%, Mouse: 100%, Rabbit: 100%, Rat: 100%
Characteristics:	This is a rabbit polyclonal antibody against GPC3. It was validated on Western Blot using a cell lysate as a positive control.
Purification:	Protein A purified

Target Details

Target:	Glypican 3 (GPC3)
---------	-------------------

Target Details

Alternative Name:	GPC3 (GPC3 Products)
Background:	<p>Cell surface heparan sulfate proteoglycans are composed of a membrane-associated protein core substituted with a variable number of heparan sulfate chains. Members of the glypican-related integral membrane proteoglycan family (GRIPS) contain a core protein anchored to the cytoplasmic membrane via a glycosyl phosphatidylinositol linkage. These proteins may play a role in the control of cell division and growth regulation. Deletion mutations in this gene are associated with Simpson-Golabi-Behmel syndrome.</p> <p>Alias Symbols: SGB, DGSX, MXR7, SDYS, SGBS, OCI-5, SGBS1, GTR2-2</p> <p>Protein Interaction Partner: UBC, WNT3A, WNT7B, IGF2, FGF2,</p> <p>Protein Size: 580</p>
Molecular Weight:	64 kDa
Gene ID:	2719
NCBI Accession:	NM_004484 , NP_004475
UniProt:	P51654
Pathways:	Glycosaminoglycan Metabolic Process

Application Details

Application Notes:	Optimal working dilutions should be determined experimentally by the investigator.
Comment:	Antigen size: 580 AA
Restrictions:	For Research Use only

Handling

Format:	Liquid
Concentration:	Lot specific
Buffer:	Liquid. Purified antibody supplied in 1x PBS buffer with 0.09 % (w/v) sodium azide and 2 % sucrose.
Preservative:	Sodium azide
Precaution of Use:	This product contains Sodium azide: a POISONOUS AND HAZARDOUS SUBSTANCE which should be handled by trained staff only.
Handling Advice:	Avoid repeated freeze-thaw cycles.

Handling

Storage:	-20 °C
Storage Comment:	For short term use, store at 2-8°C up to 1 week. For long term storage, store at -20°C in small aliquots to prevent freeze-thaw cycles.

Publications

Product cited in:	Bhave, Mars, Donthamsetty, Zhang, Tan, Luo, Bowen, Michalopoulos: "Regulation of liver growth by glypican 3, CD81, hedgehog, and Hhex." in: The American journal of pathology , Vol. 183, Issue 1, pp. 153-9, (2013) (PubMed).
-------------------	---

Images

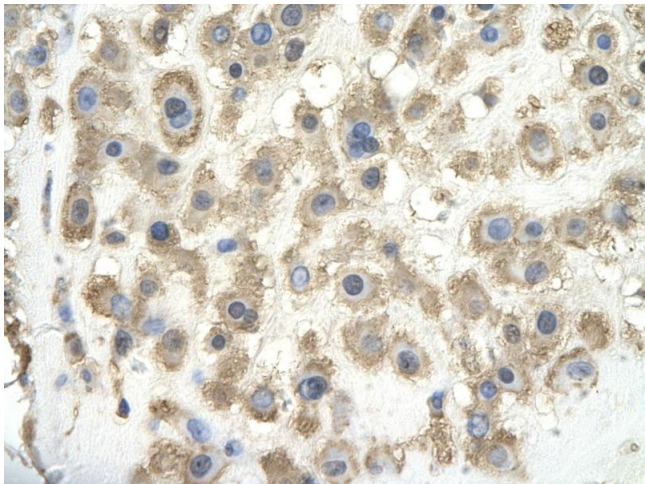


Western Blotting

Image 1. WB Suggested Anti-GPC3 Antibody Titration: 2.5ug/ml ELISA Titer: 1:1562500 Positive Control: Human Placenta

Western Blotting

Image 2. Host: Rabbit Target Name: GPC3 Sample Tissue: Human Adult Placenta Antibody Dilution: 1.0ug/ml



Immunohistochemistry

Image 3. Rabbit Anti-GPC3 antibody Paraffin Embedded
Tissue: Human Placenta cell Cellular Data: Epithelial cells of
renal tubule Antibody Concentration: 4.0-8.0 ug/ml
Magnification: 400X