

Datasheet for ABIN2780208
anti-KCNH3 antibody (Middle Region)[Go to Product page](#)

1 Image

Overview

Quantity:	100 µL
Target:	KCNH3 (Kcnh3)
Binding Specificity:	Middle Region
Reactivity:	Human, Rat, Mouse, Cow, Dog, Guinea Pig, Horse, Rabbit
Host:	Rabbit
Clonality:	Polyclonal
Conjugate:	This KCNH3 antibody is un-conjugated
Application:	Western Blotting (WB)

Product Details

Immunogen:	The immunogen is a synthetic peptide directed towards the middle region of human KCNH3
Sequence:	LYPEFAPRFS RGLRGELSYN LGAGGGSAEV DTSSLSGDNT LMSTLEEKET
Predicted Reactivity:	Cow: 86%, Dog: 86%, Guinea Pig: 86%, Horse: 86%, Human: 100%, Mouse: 93%, Rabbit: 93%, Rat: 93%
Characteristics:	This is a rabbit polyclonal antibody against KCNH3. It was validated on Western Blot using a cell lysate as a positive control.
Purification:	Affinity Purified

Target Details

Target:	KCNH3 (Kcnh3)
---------	---------------

Target Details

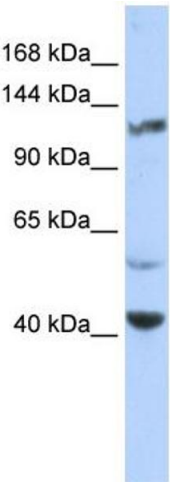
Alternative Name:	KCNH3 (Kcnh3 Products)
Background:	The exact function of this protein remains unknown. Alias Symbols: BEC1, ELK2, KIAA1282, Kv12.2 Protein Size: 1083
Molecular Weight:	117 kDa
Gene ID:	23416
NCBI Accession:	NM_012284 , NP_036416
UniProt:	Q9ULD8

Application Details

Application Notes:	Optimal working dilutions should be determined experimentally by the investigator.
Comment:	Antigen size: 1083 AA
Restrictions:	For Research Use only

Handling

Format:	Liquid
Concentration:	Lot specific
Buffer:	Liquid. Purified antibody supplied in 1x PBS buffer with 0.09 % (w/v) sodium azide and 2 % sucrose.
Preservative:	Sodium azide
Precaution of Use:	This product contains Sodium azide: a POISONOUS AND HAZARDOUS SUBSTANCE which should be handled by trained staff only.
Handling Advice:	Avoid repeated freeze-thaw cycles.
Storage:	-20 °C
Storage Comment:	For short term use, store at 2-8°C up to 1 week. For long term storage, store at -20°C in small aliquots to prevent freeze-thaw cycles.



Western Blotting

Image 1. WB Suggested Anti-KCNH3 Antibody Titration:
0.2-1 ug/ml ELISA Titer: 1:62500 Positive Control: HeLa cell lysate