

Datasheet for ABIN2780221

anti-G3BP1 antibody (N-Term)



[Go to Product page](#)

2 Images

2 Publications

Overview

Quantity:	100 µL
Target:	G3BP1
Binding Specificity:	N-Term
Reactivity:	Human, Mouse, Rat, Dog, Horse, Cow, Guinea Pig, Rabbit, Pig
Host:	Rabbit
Clonality:	Polyclonal
Conjugate:	This G3BP1 antibody is un-conjugated
Application:	Western Blotting (WB)

Product Details

Immunogen:	The immunogen is a synthetic peptide directed towards the N terminal region of human G3BP
Sequence:	EVFGGFVTEP QEESEEEVEE PEERQQTPEV VPDDSGTFYD QAVVSNDMEE
Predicted Reactivity:	Cow: 100%, Dog: 100%, Guinea Pig: 93%, Horse: 100%, Human: 100%, Mouse: 100%, Pig: 100%, Rabbit: 100%, Rat: 100%
Characteristics:	This is a rabbit polyclonal antibody against G3BP. It was validated on Western Blot using a cell lysate as a positive control.
Purification:	Protein A purified

Target Details

Target:	G3BP1
---------	-------

Target Details

Alternative Name:	G3BP (G3BP1 Products)
Background:	<p>G3BP is one of the DNA-unwinding enzymes which prefers partially unwound 3'-tailed substrates and can also unwind partial RNA/DNA and RNA/RNA duplexes in an ATP-dependent fashion. This enzyme is a member of the heterogeneous nuclear RNA-binding proteins and is also an element of the Ras signal transduction pathway. It binds specifically to the Ras-GTPase-activating protein by associating with its SH3 domain. Several alternatively spliced transcript variants of this gene have been described, but the full-length nature of some of these variants has not been determined.</p> <p>Alias Symbols: G3BP, HDH-VIII</p> <p>Protein Interaction Partner: UBC, USP10, FXR2, MDM2, RNF2, BMI1, RPS27L, EDC4, RPL35, RPL14, EIF2B3, EIF3C, PTBP1, PIN1, PA2G4, YBX1, HNRNPU, FAU, SH3RF2, TARDBP, FBXO25, RIOK2, SND1, VCAM1, env, ITGA4, IL7R, FN1, EPHA8, DTX1, PABPC1, PAXIP1, ESR1, APP, NOLC1, TPM4, LCK, CSK, KCND3,</p> <p>Protein Size: 466</p>
Molecular Weight:	51 kDa
Gene ID:	10146
NCBI Accession:	NM_005754 , NP_005745
UniProt:	Q13283
Pathways:	SARS-CoV-2 Protein Interactome

Application Details

Application Notes:	Optimal working dilutions should be determined experimentally by the investigator.
Comment:	Antigen size: 466 AA
Restrictions:	For Research Use only

Handling

Format:	Liquid
Concentration:	Lot specific
Buffer:	Liquid. Purified antibody supplied in 1x PBS buffer with 0.09 % (w/v) sodium azide and 2 % sucrose.
Preservative:	Sodium azide

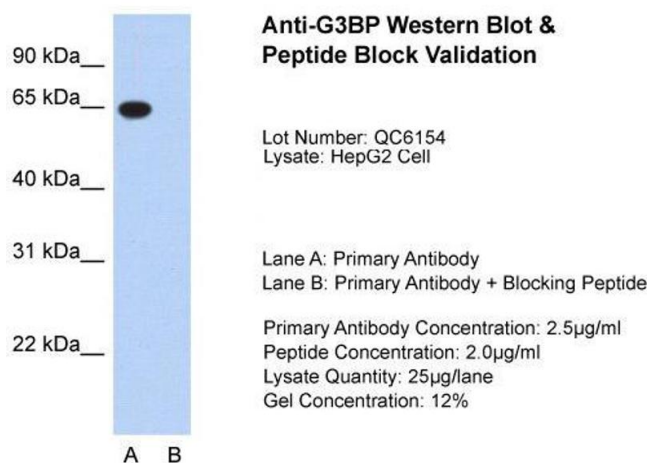
Handling

Precaution of Use:	This product contains Sodium azide: a POISONOUS AND HAZARDOUS SUBSTANCE which should be handled by trained staff only.
Handling Advice:	Avoid repeated freeze-thaw cycles.
Storage:	-20 °C
Storage Comment:	For short term use, store at 2-8°C up to 1 week. For long term storage, store at -20°C in small aliquots to prevent freeze-thaw cycles.

Publications

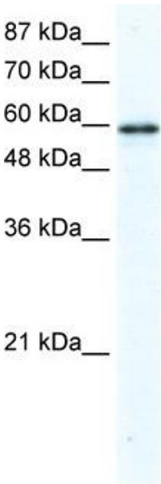
Product cited in:	<p>Lind, Svedin, Domsgen, Kapell, Laitinen, Moll, Flodström-Tullberg: "Coxsackievirus counters the host innate immune response by blocking type III interferon expression." in: The Journal of general virology, Vol. 97, Issue 6, pp. 1-12, (2016) (PubMed).</p> <p>Schulte, Liu, Panas, Thaa, Dickson, Götte, Achour, McInerney: "Combined structural, biochemical and cellular evidence demonstrates that both FGDF motifs in alphavirus nsP3 are required for efficient replication." in: Open biology, Vol. 6, Issue 7, (2016) (PubMed).</p>
-------------------	---

Images



Western Blotting

Image 1. Host: Rabbit Target Name: G3BP Sample Type: HepG2 Lane A: Primary Antibody Lane B: Primary Antibody + Blocking Peptide Primary Antibody Concentration: 2.5ug/mL Peptide Concentration: 2.0ug/mL Lysate Quantity: 25ug/lane Gel Concentration: 12%



Western Blotting

Image 2. WB Suggested Anti-G3BP Antibody Titration:
2.5ug/ml ELISA Titer: 1:312500 Positive Control: HepG2 cell lysate