

Datasheet for ABIN2780224  
**anti-SSX2 antibody (C-Term)**



[Go to Product page](#)

2 Images

1 Publication

## Overview

Quantity:	100 µL
Target:	SSX2
Binding Specificity:	C-Term
Reactivity:	Human
Host:	Rabbit
Clonality:	Polyclonal
Conjugate:	This SSX2 antibody is un-conjugated
Application:	Western Blotting (WB)

## Product Details

Immunogen:	The immunogen is a synthetic peptide directed towards the C terminal region of human SSX2
Sequence:	HRWSSQNTHN IGRFSLSTSM GAVHGTPKTI THNRDPKGGN MPGPTDCVRE
Predicted Reactivity:	Human: 100%
Characteristics:	This is a rabbit polyclonal antibody against SSX2. It was validated on Western Blot using a cell lysate as a positive control.
Purification:	Affinity Purified

## Target Details

Target:	SSX2
Alternative Name:	SSX2 ( <a href="#">SSX2 Products</a> )

## Target Details

---

**Background:** SSX2 belongs to the family of highly homologous synovial sarcoma X (SSX) breakpoint proteins. These proteins may function as transcriptional repressors. They are also capable of eliciting spontaneously humoral and cellular immune responses in cancer patients, and are potentially useful targets in cancer vaccine-based immunotherapy. SSX1, SSX2 and SSX4 genes have been involved in the t(X,18) translocation characteristically found in all synovial sarcomas. This translocation results in the fusion of the synovial sarcoma translocation gene on chromosome 18 to one of the SSX genes on chromosome X. The encoded hybrid proteins are probably responsible for transforming activity. Two transcript variants encoding distinct isoforms have been identified for this gene. The product of this gene belongs to the family of highly homologous synovial sarcoma X (SSX) breakpoint proteins. These proteins may function as transcriptional repressors. They are also capable of eliciting spontaneously humoral and cellular immune responses in cancer patients, and are potentially useful targets in cancer vaccine-based immunotherapy. SSX1, SSX2 and SSX4 genes have been involved in the t(X,18) translocation characteristically found in all synovial sarcomas. This translocation results in the fusion of the synovial sarcoma translocation gene on chromosome 18 to one of the SSX genes on chromosome X. The encoded hybrid proteins are probably responsible for transforming activity. Two transcript variants encoding distinct isoforms have been identified for this gene.

Alias Symbols: HD21, HOM-MEL-40, MGC119055, MGC15364, MGC3884, SSX, SSX2B, CT5.2a

Protein Interaction Partner: KRT40, SSX2IP, RAB3IP, SYCE1, ZMIZ2, MAGEC2, AKAP9, ZBED1, TAX1BP1, BLZF1, SUZ12, EED, SMARCA5, TLE1, SMARCA2, HDAC2, HDAC1, EZH2, ATF2, RNF2,

Protein Size: 223

---

**Molecular Weight:** 25 kDa

---

**Gene ID:** 6757

---

**NCBI Accession:** [NM\\_003147](#), [NP\\_003138](#)

## Application Details

---

**Application Notes:** Optimal working dilutions should be determined experimentally by the investigator.

---

**Comment:** Antigen size: 223 AA

---

**Restrictions:** For Research Use only

## Handling

---

---

**Format:** Liquid

---

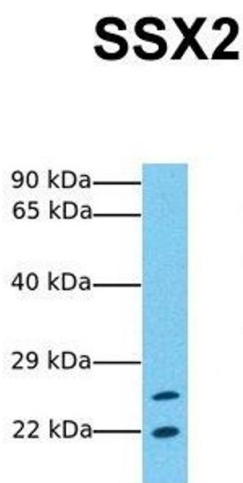
## Handling

Concentration:	Lot specific
Buffer:	Liquid. Purified antibody supplied in 1x PBS buffer with 0.09 % (w/v) sodium azide and 2 % sucrose.
Preservative:	Sodium azide
Precaution of Use:	This product contains Sodium azide: a POISONOUS AND HAZARDOUS SUBSTANCE which should be handled by trained staff only.
Handling Advice:	Avoid repeated freeze-thaw cycles.
Storage:	-20 °C
Storage Comment:	For short term use, store at 2-8°C up to 1 week. For long term storage, store at -20°C in small aliquots to prevent freeze-thaw cycles.

## Publications

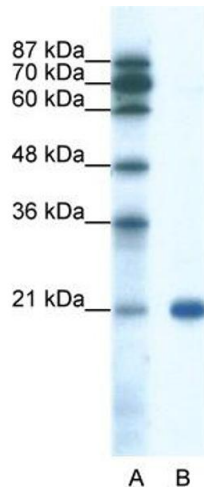
Product cited in:	Jung, Fischer, Imig, Kleber, Nuber, Reinshagen, Kamradt, Grobholz, Knuth, Renner, Wadle: "Yeast-based identification of prostate tumor antigens provides an effective vaccine platform." in: <b>Anticancer research</b> , Vol. 30, Issue 3, pp. 895-902, (2010) ( <a href="#">PubMed</a> ).
-------------------	---

## Images



### Western Blotting

**Image 1.** Host: Rabbit Target Name: SSX2 Sample Tissue: Human Jurkat Antibody Dilution: 1.0ug/ml



### Western Blotting

**Image 2.** WB Suggested Anti-SSX2 Antibody Titration: 0.2-1 ug/ml ELISA Titer: 1:312500 Positive Control: Jurkat cell lysate