

Datasheet for ABIN2780225  
**anti-ZNF35 antibody (N-Term)**



[Go to Product page](#)

1 Image

## Overview

Quantity:	100 µL
Target:	ZNF35
Binding Specificity:	N-Term
Reactivity:	Human, Pig
Host:	Rabbit
Clonality:	Polyclonal
Conjugate:	This ZNF35 antibody is un-conjugated
Application:	Western Blotting (WB)

## Product Details

Immunogen:	The immunogen is a synthetic peptide directed towards the N terminal region of human ZNF35
Sequence:	ASSQQVHSEN IKVWAPVQGL QTGLDGSEEE EKGQNISWDM AVVLKATQEA
Predicted Reactivity:	Human: 100%, Pig: 83%
Characteristics:	This is a rabbit polyclonal antibody against ZNF35. It was validated on Western Blot using a cell lysate as a positive control.
Purification:	Affinity Purified

## Target Details

Target:	ZNF35
Alternative Name:	ZNF35 ( <a href="#">ZNF35 Products</a> )

## Target Details

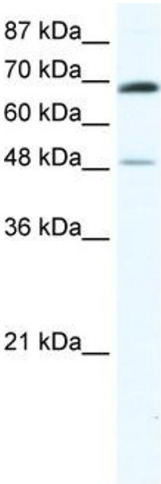
Background:	ZNF35 is a new candidate transcription factor Alias Symbols: HF10, HF.10, Zfp105 Protein Interaction Partner: APP, CREB1, CDC5L, Protein Size: 519
Molecular Weight:	58 kDa
Gene ID:	7584
NCBI Accession:	<a href="#">NM_003420</a> , <a href="#">NP_003411</a>
UniProt:	<a href="#">P13682</a>

## Application Details

Application Notes:	Optimal working dilutions should be determined experimentally by the investigator.
Comment:	Antigen size: 519 AA
Restrictions:	For Research Use only

## Handling

Format:	Liquid
Concentration:	Lot specific
Buffer:	Liquid. Purified antibody supplied in 1x PBS buffer with 0.09 % (w/v) sodium azide and 2 % sucrose.
Preservative:	Sodium azide
Precaution of Use:	This product contains Sodium azide: a POISONOUS AND HAZARDOUS SUBSTANCE which should be handled by trained staff only.
Handling Advice:	Avoid repeated freeze-thaw cycles.
Storage:	-20 °C
Storage Comment:	For short term use, store at 2-8°C up to 1 week. For long term storage, store at -20°C in small aliquots to prevent freeze-thaw cycles.



**Western Blotting**

**Image 1.** WB Suggested Anti-ZNF35 Antibody Titration: 0.2-1 ug/ml ELISA Titer: 1:312500 Positive Control: Jurkat cell lysate