

Datasheet for ABIN2780255
anti-EBF2 antibody (C-Term)



[Go to Product page](#)

1 Image

Overview

Quantity:	100 µL
Target:	EBF2
Binding Specificity:	C-Term
Reactivity:	Human, Mouse, Rat, Cow, Guinea Pig, Horse, Rabbit, Dog, Zebrafish (Danio rerio)
Host:	Rabbit
Clonality:	Polyclonal
Conjugate:	This EBF2 antibody is un-conjugated
Application:	Western Blotting (WB)

Product Details

Immunogen:	The immunogen is a synthetic peptide directed towards the C-terminal region of Human EBF2
Sequence:	DIAEALYSVP RNPSQLPALS SSPAHSGMMG INSYGSQLGV SISESTQGNN
Predicted Reactivity:	Cow: 100%, Dog: 100%, Guinea Pig: 100%, Horse: 100%, Human: 100%, Mouse: 100%, Rabbit: 92%, Rat: 100%, Zebrafish: 86%
Characteristics:	This is a rabbit polyclonal antibody against EBF2. It was validated on Western Blot.
Purification:	Affinity Purified

Target Details

Target:	EBF2
Alternative Name:	EBF2 (EBF2 Products)

Target Details

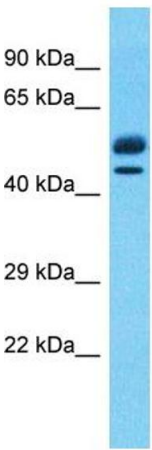
Background:	<p>The protein encoded by this gene belongs to the COE (Collier/Olf/EBF) family of non-basic, helix-loop-helix transcription factors that have a well conserved DNA binding domain. The COE family proteins play an important role in variety of developmental processes. Studies in mouse suggest that this gene may be involved in the differentiation of osteoblasts.</p> <p>Protein Interaction Partner: ZNF423,</p> <p>Protein Size: 427</p>
Molecular Weight:	46 kDa
Gene ID:	64641
UniProt:	B7Z934

Application Details

Restrictions:	For Research Use only
---------------	-----------------------

Handling

Format:	Liquid
Concentration:	1 mg/mL
Buffer:	Liquid. Purified antibody supplied in 1x PBS buffer with 0.09 % (w/v) sodium azide and 2 % sucrose.
Preservative:	Sodium azide
Precaution of Use:	This product contains Sodium azide: a POISONOUS AND HAZARDOUS SUBSTANCE which should be handled by trained staff only.
Handling Advice:	Avoid repeat freeze-thaw cycles.
Storage:	-20 °C
Storage Comment:	For short term use, store at 2-8°C up to 1 week. For long term storage, store at -20°C in small aliquots to prevent freeze-thaw cycles.



Host: Rabbit
Target Name: EBF2
Sample Tissue: Thymus Tumor Lysate
Antibody Dilution: 1.0µg/ml

Western Blotting

Image 1. Host: Rabbit Target Name: EBF2 Sample Type: Thymus Tumor lysates Antibody Dilution: 1.0ug/ml