

Datasheet for ABIN2780268

anti-Zinc Finger Protein 27 (ZFP27) (Middle Region) antibody[Go to Product page](#)**1** Image

Overview

Quantity:	100 µL
Target:	Zinc Finger Protein 27 (ZFP27)
Binding Specificity:	Middle Region
Reactivity:	Human, Mouse, Cow, Pig, Rabbit, Rat, Dog, Horse
Host:	Rabbit
Clonality:	Polyclonal
Conjugate:	Un-conjugated
Application:	Western Blotting (WB)

Product Details

Immunogen:	The immunogen is a synthetic peptide directed towards the middle region of Mouse Zfp27
Sequence:	KPYGCTDCGK SFTSKSQLLV HRPHTGEKP YVCAECGKAF SGRSNLSKHQ
Predicted Reactivity:	Cow: 93%, Dog: 79%, Horse: 77%, Human: 100%, Mouse: 86%, Pig: 93%, Rabbit: 75%, Rat: 93%
Characteristics:	This is a rabbit polyclonal antibody against Zfp27. It was validated on Western Blot.
Purification:	Affinity Purified

Target Details

Target:	Zinc Finger Protein 27 (ZFP27)
Alternative Name:	Zfp27 (ZFP27 Products)
Background:	Zfp27 may be involved in transcriptional regulation.

Target Details

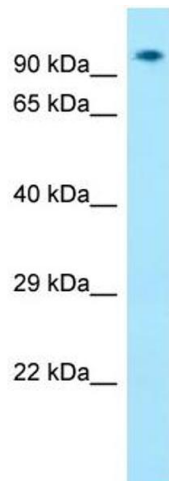
	Alias Symbols: Zfp-27, mkr-4, mszf76
	Protein Size: 819
Molecular Weight:	93 kDa
Gene ID:	22689
NCBI Accession:	NM_001037707 , NP_001032796
UniProt:	P10077

Application Details

Application Notes:	Optimal working dilutions should be determined experimentally by the investigator.
Comment:	Antigen size: 819 AA
Restrictions:	For Research Use only

Handling

Format:	Liquid
Concentration:	Lot specific
Buffer:	Liquid. Purified antibody supplied in 1x PBS buffer with 0.09 % (w/v) sodium azide and 2 % sucrose.
Preservative:	Sodium azide
Precaution of Use:	This product contains Sodium azide: a POISONOUS AND HAZARDOUS SUBSTANCE which should be handled by trained staff only.
Handling Advice:	Avoid repeated freeze-thaw cycles.
Storage:	-20 °C
Storage Comment:	For short term use, store at 2-8°C up to 1 week. For long term storage, store at -20°C in small aliquots to prevent freeze-thaw cycles.



Western Blotting

Image 1. Host: Rabbit Target Name: Zfp27 Sample Type: Mouse Muscle lysates Antibody Dilution: 1.0ug/ml