

Datasheet for ABIN2780269

anti-Zinc Finger Protein 62 (ZFP62) (Middle Region) antibody[Go to Product page](#)**1** Image

Overview

Quantity:	100 µL
Target:	Zinc Finger Protein 62 (ZFP62)
Binding Specificity:	Middle Region
Reactivity:	Human, Cow, Rabbit, Mouse, Rat, Pig, Horse, Zebrafish (Danio rerio), Dog
Host:	Rabbit
Clonality:	Polyclonal
Conjugate:	Un-conjugated
Application:	Western Blotting (WB)

Product Details

Immunogen:	The immunogen is a synthetic peptide directed towards the middle region of human ZFP62
Sequence:	HKRIHTGEKP YECDICGKTF SNSSGLRVHK RIHTGEKPYE CDECGKAFIT
Predicted Reactivity:	Cow: 100%, Dog: 100%, Horse: 100%, Human: 100%, Mouse: 100%, Pig: 100%, Rabbit: 100%, Rat: 100%, Zebrafish: 79%
Characteristics:	This is a rabbit polyclonal antibody against ZFP62. It was validated on Western Blot using a cell lysate as a positive control.
Purification:	Affinity Purified

Target Details

Target:	Zinc Finger Protein 62 (ZFP62)
---------	--------------------------------

Target Details

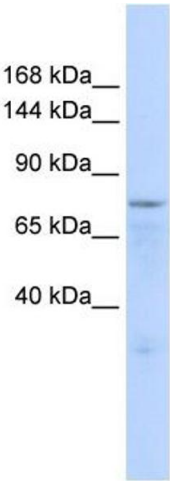
Alternative Name:	ZFP62 (ZFP62 Products)
Background:	ZFP62 may play a role in differentiating skeletal muscle. Alias Symbols: FLJ34057, FLJ34231, ZET, ZNF755 Protein Size: 726
Molecular Weight:	80 kDa
Gene ID:	92379
NCBI Accession:	XM_931640 , XP_936733

Application Details

Application Notes:	Optimal working dilutions should be determined experimentally by the investigator.
Comment:	Antigen size: 726 AA
Restrictions:	For Research Use only

Handling

Format:	Liquid
Concentration:	Lot specific
Buffer:	Liquid. Purified antibody supplied in 1x PBS buffer with 0.09 % (w/v) sodium azide and 2 % sucrose.
Preservative:	Sodium azide
Precaution of Use:	This product contains Sodium azide: a POISONOUS AND HAZARDOUS SUBSTANCE which should be handled by trained staff only.
Handling Advice:	Avoid repeated freeze-thaw cycles.
Storage:	-20 °C
Storage Comment:	For short term use, store at 2-8°C up to 1 week. For long term storage, store at -20°C in small aliquots to prevent freeze-thaw cycles.



Western Blotting

Image 1. WB Suggested Anti-ZFP62 Antibody Titration:
0.2-1 ug/ml ELISA Titer: 1:312500 Positive Control: 293T
cell lysate