



[Go to Product page](#)

Datasheet for ABIN2780274

anti-Zfp872 antibody (Middle Region)

1 Image

Overview

Quantity:	100 µL
Target:	Zfp872 (ZFP872)
Binding Specificity:	Middle Region
Reactivity:	Cow, Horse, Human, Mouse, Rat, Guinea Pig, Zebrafish (Danio rerio)
Host:	Rabbit
Clonality:	Polyclonal
Conjugate:	This Zfp872 antibody is un-conjugated
Application:	Western Blotting (WB)

Product Details

Sequence:	CHSEHTQWES HGFRGKLYQC KDCGKAFSFQ SSFRIHERTH TGEKPYMCKE
Predicted Reactivity:	Cow: 92%, Guinea Pig: 100%, Horse: 100%, Human: 100%, Mouse: 100%, Rat: 100%, Zebrafish: 92%
Characteristics:	This is a rabbit polyclonal antibody against Zfp872. It was validated on Western Blot.
Purification:	Affinity Purified

Target Details

Target:	Zfp872 (ZFP872)
Alternative Name:	Zfp872 (ZFP872 Products)
Background:	The function of this protein remains unknown.

Target Details

Alias Symbols: 9530015I07Rik

Protein Size: 465

Molecular Weight: 54 kDa

Gene ID: 619310

NCBI Accession: [NM_001033813](#), [NP_001028985](#)

Application Details

Application Notes: Optimal working dilutions should be determined experimentally by the investigator.

Comment: Antigen size: 465 AA

Restrictions: For Research Use only

Handling

Format: Liquid

Concentration: Lot specific

Buffer: Liquid. Purified antibody supplied in 1x PBS buffer with 0.09 % (w/v) sodium azide and 2 % sucrose.

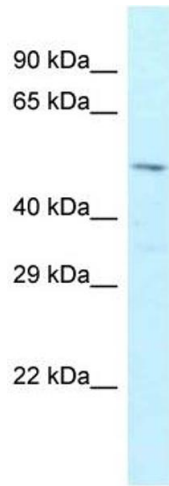
Preservative: Sodium azide

Precaution of Use: This product contains Sodium azide: a POISONOUS AND HAZARDOUS SUBSTANCE which should be handled by trained staff only.

Handling Advice: Avoid repeated freeze-thaw cycles.

Storage: -20 °C

Storage Comment: For short term use, store at 2-8°C up to 1 week. For long term storage, store at -20°C in small aliquots to prevent freeze-thaw cycles.



Western Blotting

Image 1. WB Suggested Anti-Zfp872 Antibody Titration:
1.0 ug/ml Positive Control: Mouse Spleen