



Datasheet for ABIN2780278
anti-T-Box 18 antibody (C-Term)



[Go to Product page](#)

4 Images

Overview

Quantity:	100 µL
Target:	T-Box 18 (TBX18)
Binding Specificity:	C-Term
Reactivity:	Human, Mouse, Rat, Dog, Cow, Guinea Pig, Rabbit, Horse, Zebrafish (Danio rerio)
Host:	Rabbit
Clonality:	Polyclonal
Conjugate:	This T-Box 18 antibody is un-conjugated
Application:	Western Blotting (WB), Immunohistochemistry (IHC)

Product Details

Immunogen:	The immunogen is a synthetic peptide directed towards the C terminal region of human TBX18
Sequence:	NQTHQGSYNT FRLHSPCALY GYNFSTSPKL AASPEKIVSS QGSFLGSSPS
Predicted Reactivity:	Cow: 100%, Dog: 100%, Guinea Pig: 100%, Horse: 100%, Human: 100%, Mouse: 100%, Rabbit: 100%, Rat: 100%, Zebrafish: 92%
Characteristics:	This is a rabbit polyclonal antibody against TBX18. It was validated on Western Blot using a cell lysate as a positive control.
Purification:	Affinity Purified

Target Details

Target:	T-Box 18 (TBX18)
---------	------------------

Target Details

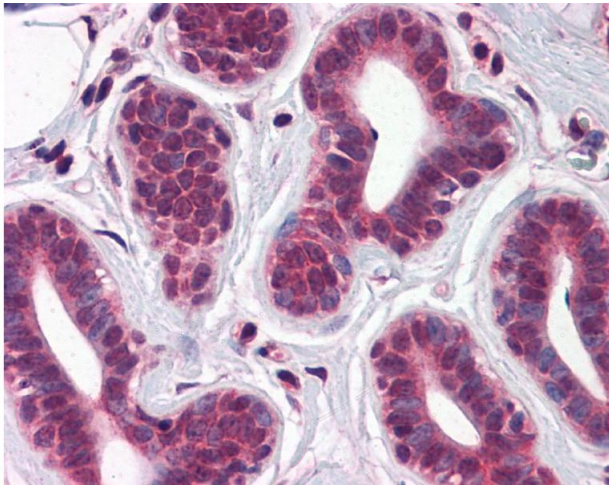
Alternative Name:	TBX18 (TBX18 Products)
Background:	TBX18 is a probable transcriptional regulator involved in developmental processes. Alias Symbols: - Protein Size: 607
Molecular Weight:	65 kDa
Gene ID:	9096
NCBI Accession:	XM_938268 , XP_943361
UniProt:	O95935
Pathways:	Sensory Perception of Sound

Application Details

Application Notes:	Optimal working dilutions should be determined experimentally by the investigator.
Comment:	Antigen size: 607 AA
Restrictions:	For Research Use only

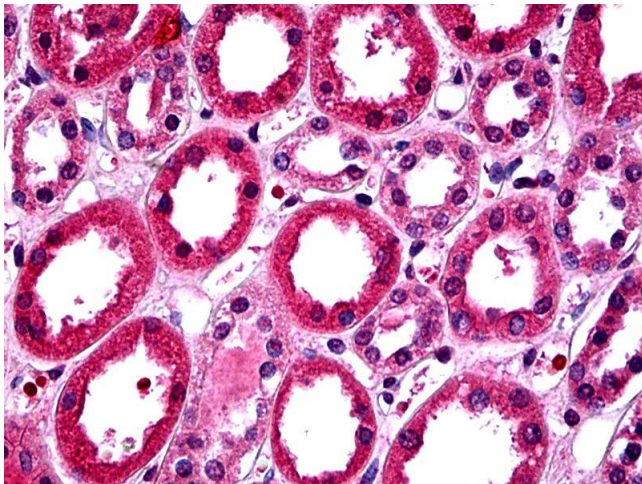
Handling

Format:	Liquid
Concentration:	Lot specific
Buffer:	Liquid. Purified antibody supplied in 1x PBS buffer with 0.09 % (w/v) sodium azide and 2 % sucrose.
Preservative:	Sodium azide
Precaution of Use:	This product contains Sodium azide: a POISONOUS AND HAZARDOUS SUBSTANCE which should be handled by trained staff only.
Handling Advice:	Avoid repeated freeze-thaw cycles.
Storage:	-20 °C
Storage Comment:	For short term use, store at 2-8°C up to 1 week. For long term storage, store at -20°C in small aliquots to prevent freeze-thaw cycles.



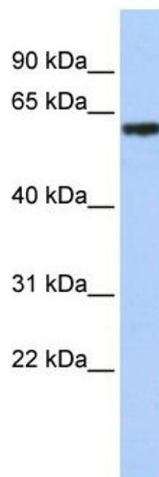
Immunohistochemistry

Image 1. IHC Information: Paraffin embedded breast tissue, tested with an antibody dilution of 5 ug/ml.



Immunohistochemistry

Image 2. IHC Information: Paraffin embedded renal tubules tissue, tested with an antibody dilution of 5 ug/ml.



Western Blotting

Image 3. WB Suggested Anti-TBX18 Antibody Titration: 0.2-1 ug/ml ELISA Titer: 1:312500 Positive Control: Jurkat cell lysate

Please check the [product details page](#) for more images. Overall 4 images are available for ABIN2780278.