

Datasheet for ABIN2780316
anti-LMX1A antibody (C-Term)



[Go to Product page](#)

1 Image

Overview

Quantity:	100 µL
Target:	LMX1A
Binding Specificity:	C-Term
Reactivity:	Human, Mouse, Rat, Dog, Horse, Cow, Guinea Pig, Rabbit, Pig
Host:	Rabbit
Clonality:	Polyclonal
Conjugate:	This LMX1A antibody is un-conjugated
Application:	Western Blotting (WB)

Product Details

Immunogen:	The immunogen is a synthetic peptide corresponding to a region of Mouse
Sequence:	AIEQSVYNSD PFRQGLTPPQ MPGDHMHPYG AEPLFHD LDS DDTSLSNLGD
Predicted Reactivity:	Cow: 93%, Dog: 93%, Guinea Pig: 93%, Horse: 93%, Human: 93%, Mouse: 100%, Pig: 100%, Rabbit: 93%, Rat: 100%
Characteristics:	This is a rabbit polyclonal antibody against LMX1A. It was validated on Western Blot using a cell lysate as a positive control.
Purification:	Protein A purified

Target Details

Target:	LMX1A
---------	-------

Target Details

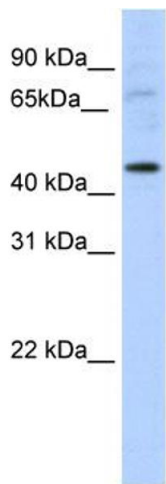
Alternative Name:	LMX1A (LMX1A Products)
Background:	<p>Lmx1a acts as a transcriptional activator by binding to an A/T-rich sequence, the FLAT element, in the insulin gene promoter. It is required for development of the roof plate and, in turn, for specification of dorsal cell fates in the CNS and developing vertebrae.</p> <p>Alias Symbols: dr, sst, Lmx1.1, dreher</p> <p>Protein Interaction Partner: Phf10, Ssbp2, Ldb2, Ldb1, BMPR2,</p> <p>Protein Size: 382</p>
Molecular Weight:	42 kDa
Gene ID:	110648
NCBI Accession:	NM_033652 , NP_387501
UniProt:	Q9JKU8
Pathways:	Dopaminergic Neurogenesis

Application Details

Application Notes:	Optimal working dilutions should be determined experimentally by the investigator.
Comment:	Antigen size: 382 AA
Restrictions:	For Research Use only

Handling

Format:	Liquid
Concentration:	Lot specific
Buffer:	Liquid. Purified antibody supplied in 1x PBS buffer with 0.09 % (w/v) sodium azide and 2 % sucrose.
Preservative:	Sodium azide
Precaution of Use:	This product contains Sodium azide: a POISONOUS AND HAZARDOUS SUBSTANCE which should be handled by trained staff only.
Handling Advice:	Avoid repeated freeze-thaw cycles.
Storage:	-20 °C
Storage Comment:	For short term use, store at 2-8°C up to 1 week. For long term storage, store at -20°C in small aliquots to prevent freeze-thaw cycles.



Western Blotting

Image 1. WB Suggested Anti-LMX1A Antibody Titration:
5.0ug/ml Positive Control: SP2/0 cell lysate