

Datasheet for ABIN2780324
anti-VGLL1 antibody (C-Term)



[Go to Product page](#)

1 Image

Overview

Quantity:	100 µL
Target:	VGLL1
Binding Specificity:	C-Term
Reactivity:	Mouse
Host:	Rabbit
Clonality:	Polyclonal
Conjugate:	This VGLL1 antibody is un-conjugated
Application:	Western Blotting (WB)

Product Details

Immunogen:	The immunogen is a synthetic peptide directed towards the C-terminal region of Mouse Vgll1
Sequence:	PEVYRVFPDR HLTPEVYHVF PDRHLTPEVY PDGRCGPLQH LVQQDRYQNH
Predicted Reactivity:	Mouse: 100%
Characteristics:	This is a rabbit polyclonal antibody against Vgll1. It was validated on Western Blot.
Purification:	Affinity Purified

Target Details

Target:	VGLL1
Alternative Name:	Vgll1 (VGLL1 Products)
Background:	Vgll1 may act as a specific coactivator for the mammalian TEFs.

Target Details

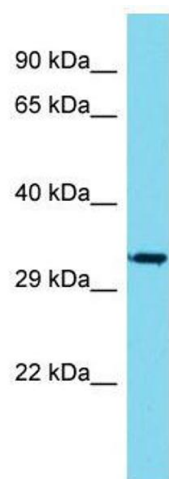
	Alias Symbols: Tondu
	Protein Size: 307
Molecular Weight:	35 kDa
Gene ID:	170828
NCBI Accession:	NM_133251 , NP_573514
UniProt:	Q99NC0

Application Details

Application Notes:	Optimal working dilutions should be determined experimentally by the investigator.
Comment:	Antigen size: 307 AA
Restrictions:	For Research Use only

Handling

Format:	Liquid
Concentration:	Lot specific
Buffer:	Liquid. Purified antibody supplied in 1x PBS buffer with 0.09 % (w/v) sodium azide and 2 % sucrose.
Preservative:	Sodium azide
Precaution of Use:	This product contains Sodium azide: a POISONOUS AND HAZARDOUS SUBSTANCE which should be handled by trained staff only.
Handling Advice:	Avoid repeated freeze-thaw cycles.
Storage:	-20 °C
Storage Comment:	For short term use, store at 2-8°C up to 1 week. For long term storage, store at -20°C in small aliquots to prevent freeze-thaw cycles.



Western Blotting

Image 1. Host: Rabbit Target Name: Vgll1 Sample Type: Mouse Stomach lysates Antibody Dilution: 1.0ug/ml