



[Go to Product page](#)

Datasheet for ABIN2780326

## anti-ERCC3 antibody (N-Term)

1 Image

1 Publication

### Overview

Quantity:	100 µL
Target:	ERCC3
Binding Specificity:	N-Term
Reactivity:	Human, Rat, Cow, Dog, Zebrafish (Danio rerio), Rabbit, Guinea Pig, Pig, Saccharomyces cerevisiae
Host:	Rabbit
Clonality:	Polyclonal
Conjugate:	This ERCC3 antibody is un-conjugated
Application:	Western Blotting (WB)

### Product Details

Immunogen:	The immunogen is a synthetic peptide directed towards the N terminal region of human ERCC3
Sequence:	MGKRDRADRD KKKSRKRHYE DEEDDEEDAP GNDPQEAVPS AAGKQVDESG
Predicted Reactivity:	Cow: 86%, Dog: 86%, Guinea Pig: 79%, Human: 100%, Pig: 93%, Rabbit: 79%, Rat: 79%, Yeast: 90%, Zebrafish: 79%
Characteristics:	This is a rabbit polyclonal antibody against ERCC3. It was validated on Western Blot using a cell lysate as a positive control.
Purification:	Affinity Purified

### Target Details

Target:	ERCC3
---------	-------

## Target Details

---

Alternative Name: ERCC3 ([ERCC3 Products](#))

---

Background: ERCC3 is an ATP-dependent DNA helicase that functions in nucleotide excision repair and complements xeroderma pigmentosum group B mutations. It also is the 89 kDa subunit of basal transcription factor 2 (TFIIH) and thus functions in class II transcription.

Alias Symbols: BTF2, GTF2H, RAD25, TFIIH, XPB

Protein Interaction Partner: XIAP, CEP70, UBC, rev, SRPK2, CDK7, TP53, E2F1, CDK8, CCNC, GTF2H5, ERCC2, MSANTD2, UVSSA, POLR2C, KPNA3, RAD52, MMS19, SIX5, GTF2H4, GTF2H3, GTF2H1, tat, COPS2, GTF2H2, NEDD8, ERCC6, POLR2A, AR, CCNH, MYC, MNAT1, ZSCAN1, ATF7IP, GCN1L1, ERCC5, BCR, PSMC5

Protein Size: 782

---

Molecular Weight: 89 kDa

---

Gene ID: 2071

---

NCBI Accession: [NM\\_000122](#), [NP\\_000113](#)

---

UniProt: [P19447](#)

---

Pathways: [DNA Damage Repair](#)

---

## Application Details

---

Application Notes: Optimal working dilutions should be determined experimentally by the investigator.

---

Comment: Antigen size: 782 AA

---

Restrictions: For Research Use only

---

## Handling

---

Format: Liquid

---

Concentration: Lot specific

---

Buffer: Liquid. Purified antibody supplied in 1x PBS buffer with 0.09 % (w/v) sodium azide and 2 % sucrose.

---

Preservative: Sodium azide

---

Precaution of Use: This product contains Sodium azide: a POISONOUS AND HAZARDOUS SUBSTANCE which should be handled by trained staff only.

---

Handling Advice: Avoid repeated freeze-thaw cycles.

---

## Handling

---

Storage: -20 °C

---

Storage Comment: For short term use, store at 2-8°C up to 1 week. For long term storage, store at -20°C in small aliquots to prevent freeze-thaw cycles.

---

## Publications

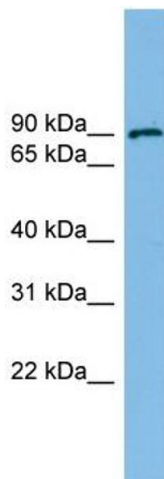
---

Product cited in: Schlögl, Keinrath, Zimmermann, Scherer, Leeb, Pfurtscheller: "A fully automated correction method of EOG artifacts in EEG recordings." in: **Clinical neurophysiology : official journal of the International Federation of Clinical Neurophysiology**, Vol. 118, Issue 1, pp. 98-104, (2006) ([PubMed](#)).

---

## Images

---



### Western Blotting

**Image 1.** WB Suggested Anti-ERCC3 Antibody Titration: 0.2-1 ug/ml ELISA Titer: 1:312500 Positive Control: HCT15 cell lysate ERCC3 is supported by BioGPS gene expression data to be expressed in HCT15