

Datasheet for ABIN2780330  
**anti-PDX1 antibody (N-Term)**

## 3 Images

[Go to Product page](#)

## Overview

Quantity:	100 µL
Target:	PDX1
Binding Specificity:	N-Term
Reactivity:	Human, Mouse, Rat, Dog, Horse, Rabbit, Cow, Pig
Host:	Rabbit
Clonality:	Polyclonal
Conjugate:	This PDX1 antibody is un-conjugated
Application:	Western Blotting (WB)

## Product Details

Immunogen:	The immunogen is a synthetic peptide directed towards the N terminal region of human PDX1
Sequence:	MNGEEQYYAA TQLYKDPCAF QRGPAPEFSA SPPACLYMGR QPPPPPPHPF
Predicted Reactivity:	Cow: 100%, Dog: 92%, Horse: 100%, Human: 100%, Mouse: 100%, Pig: 100%, Rabbit: 100%, Rat: 100%
Characteristics:	This is a rabbit polyclonal antibody against PDX1. It was validated on Western Blot using a cell lysate as a positive control.
Purification:	Affinity Purified

## Target Details

Target:	PDX1
---------	------

## Target Details

Alternative Name:	PDX1 ( <a href="#">PDX1 Products</a> )
Background:	<p>The protein encoded by this gene is a transcriptional activator of several genes, including insulin, somatostatin, glucokinase, islet amyloid polypeptide, and glucose transporter type 2.</p> <p>The encoded nuclear protein is involved in the early development of</p> <p>Alias Symbols: IDX-1, IPF1, IUF1, MODY4, PDX-1, STF-1, GSF</p> <p>Protein Interaction Partner: UBC, MAPK14, PCIF1, Dlg4, ATF3, PBX1, XRCC5, PRKDC, XRCC6, ALK, SPOP, MAFA, NEUROD1, PDX1, IAPP, TCF3, SLC2A2, CREB1,</p> <p>Protein Size: 283</p>
Molecular Weight:	31 kDa
Gene ID:	3651
NCBI Accession:	<a href="#">NM_000209</a> , <a href="#">NP_000200</a>
UniProt:	<a href="#">P52945</a>
Pathways:	<a href="#">Nuclear Receptor Transcription Pathway</a> , <a href="#">Positive Regulation of Peptide Hormone Secretion</a> , <a href="#">Steroid Hormone Mediated Signaling Pathway</a> , <a href="#">Hormone Transport</a> , <a href="#">Carbohydrate Homeostasis</a> , <a href="#">Chromatin Binding</a> , <a href="#">Maintenance of Protein Location</a>

## Application Details

Application Notes:	Optimal working dilutions should be determined experimentally by the investigator.
Comment:	Antigen size: 283 AA
Restrictions:	For Research Use only

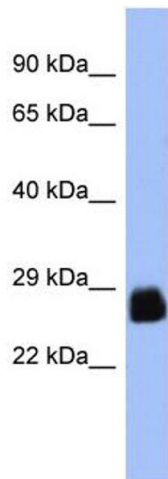
## Handling

Format:	Liquid
Concentration:	Lot specific
Buffer:	Liquid. Purified antibody supplied in 1x PBS buffer with 0.09 % (w/v) sodium azide and 2 % sucrose.
Preservative:	Sodium azide
Precaution of Use:	This product contains Sodium azide: a POISONOUS AND HAZARDOUS SUBSTANCE which should be handled by trained staff only.
Handling Advice:	Avoid repeated freeze-thaw cycles.

Handling

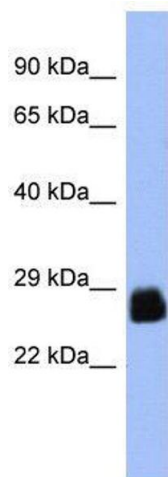
Storage:	-20 °C
Storage Comment:	For short term use, store at 2-8°C up to 1 week. For long term storage, store at -20°C in small aliquots to prevent freeze-thaw cycles.

Images



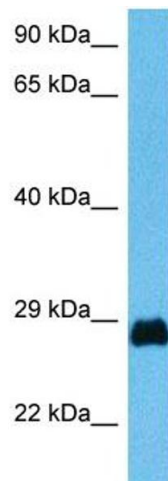
Western Blotting

**Image 1.** WB Suggested Anti-PDX1 Antibody Titration: 0.2-1 ug/ml ELISA Titer: 1:312500 Positive Control: PANC1 cell lysate PDX1 is strongly supported by BioGPS gene expression data to be expressed in Human PANC1 cells



Western Blotting

**Image 2.** WB Suggested Anti-PDX1 Antibody Titration: 0.2-1 µg/mL ELISA Titer: 1:12500 Positive Control: PANC1 cell lysate PDX1 is strongly supported by BioGPS gene expression data to be expressed in Human PANC1 cells



Western Blotting

**Image 3.** Host: Mouse Target Name: PDX1 Sample Tissue: Mouse Testis Antibody Dilution: 1ug/ml