

Datasheet for ABIN2780331
anti-MEFV antibody (N-Term)[Go to Product page](#)

2 Images

Overview

Quantity:	100 µL
Target:	MEFV
Binding Specificity:	N-Term
Reactivity:	Human, Horse, Rabbit, Pig
Host:	Rabbit
Clonality:	Polyclonal
Conjugate:	This MEFV antibody is un-conjugated
Application:	Western Blotting (WB)

Product Details

Immunogen:	The immunogen is a synthetic peptide directed towards the N terminal region of human MEFV
Sequence:	MAKTPSDHLL STEELVPYD FEKFKFKLQN TSVQKEHSRI PRSQIQRARP
Predicted Reactivity:	Horse: 85%, Human: 100%, Pig: 77%, Rabbit: 77%
Characteristics:	This is a rabbit polyclonal antibody against MEFV. It was validated on Western Blot using a cell lysate as a positive control.
Purification:	Affinity Purified

Target Details

Target:	MEFV
Alternative Name:	MEFV (MEFV Products)

Target Details

Background:	<p>MEFV was identified as the gene that when mutated causes Mediterranean fever, a hereditary periodic fever syndrome. MEFV is expressed in granulocytes and myeloid bone marrow precursors. This gene encodes a protein, also known as pyrin or marenostin, that is an important modulator of innate immunity. Mutations in this gene are associated with Mediterranean fever, a hereditary periodic fever syndrome. Publication Note: This RefSeq record includes a subset of the publications that are available for this gene. Please see the Entrez Gene record to access additional publications.</p> <p>Alias Symbols: FMF, MEF, MGC126560, MGC126586, TRIM20</p> <p>Protein Interaction Partner: COG5, PYCARD, PSTPIP1,</p> <p>Protein Size: 781</p>
Molecular Weight:	86 kDa
Gene ID:	4210
NCBI Accession:	NM_000243 , NP_000234
UniProt:	O15553
Pathways:	Positive Regulation of Endopeptidase Activity

Application Details

Application Notes:	Optimal working dilutions should be determined experimentally by the investigator.
Comment:	Antigen size: 781 AA
Restrictions:	For Research Use only

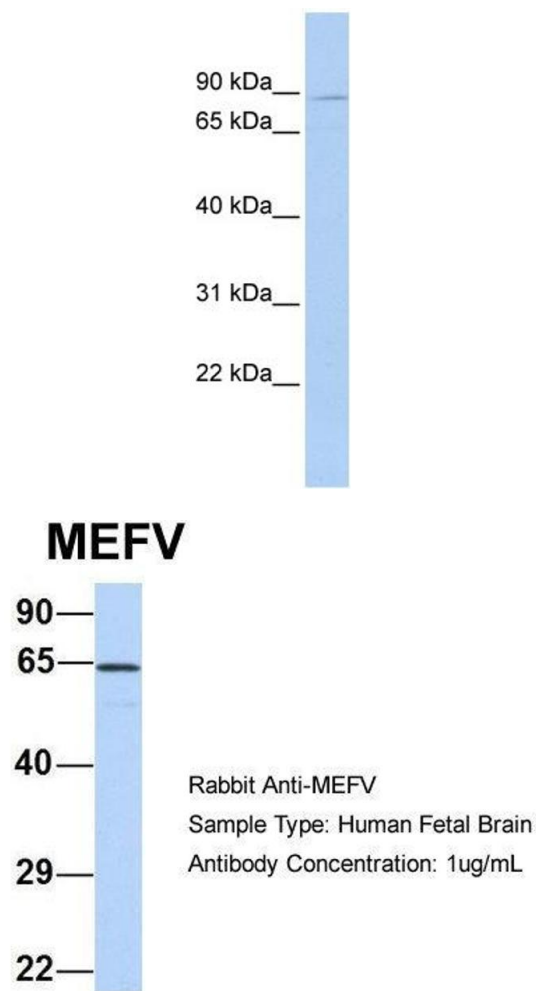
Handling

Format:	Liquid
Concentration:	Lot specific
Buffer:	Liquid. Purified antibody supplied in 1x PBS buffer with 0.09 % (w/v) sodium azide and 2 % sucrose.
Preservative:	Sodium azide
Precaution of Use:	This product contains Sodium azide: a POISONOUS AND HAZARDOUS SUBSTANCE which should be handled by trained staff only.
Handling Advice:	Avoid repeated freeze-thaw cycles.

Handling

Storage:	-20 °C
Storage Comment:	For short term use, store at 2-8°C up to 1 week. For long term storage, store at -20°C in small aliquots to prevent freeze-thaw cycles.

Images



Western Blotting

Image 1. WB Suggested Anti-MEFV Antibody Titration: 0.2-1 ug/ml ELISA Titer: 1:1562500 Positive Control: HepG2 cell lysate

Western Blotting

Image 2. Host: Rabbit Target Name: MEFV Sample Type: Human Fetal Brain Antibody Dilution: 1.0ug/ml